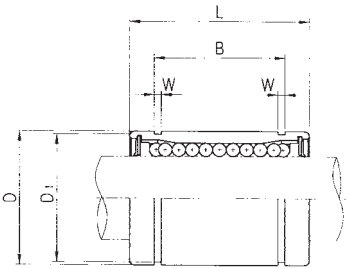
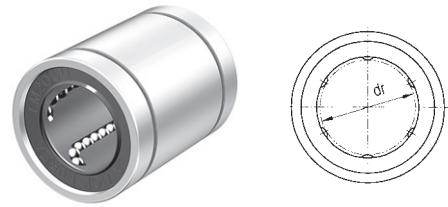


LME CLOSED LINEAR BEARING

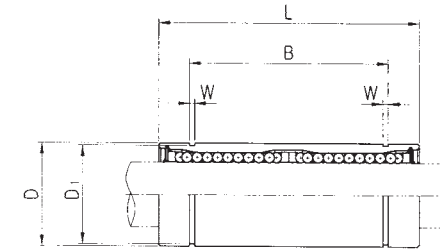
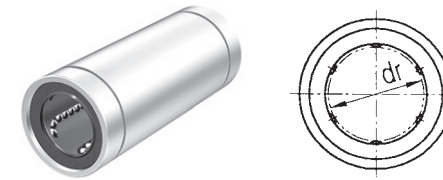


| | | | | | | | |
|---|-----|----|----|---|---|---|---|
| European Standard Samick Linear Bearing | LME | 20 | UU | - | A | N | S |
| Nominal Shaft Diameter | | | | | | | |
| Seal | | | | | | | |
| Blank : No Seal U : One Side Seal UU : Both Side Seal | | | | | | | |
| Retainer | | | | | | | |
| Blank : Resin retainer(Standard) A : Steel retainer(High temperature) | | | | | | | |
| Outer-sleeves (by corrosion resistance type) | | | | | | | |
| Blank : No-plating(Standard) N : Electroless nickel plating R : Raydent treatment | | | | | | | |
| Ball type (by corrosion resistance) | | | | | | | |
| Blank : High carbon bearing steel ball (standard) S : Stainless steel ball | | | | | | | |

| PART NUMBER | DIAMETER | | L | B | W | D ₁ | BASIC LOAD RATING(N) | | NO. OF BALL CIRCUIT | WEIGHT (g) |
|-------------|----------|-------|-----|-------|------|----------------|--------------------------|-------------|---------------------|------------|
| | Resin | Steel | | | | | d _r TOLERANCE | D TOLERANCE | | |
| LME5 | | | 22 | 14.5 | 1.1 | 11.5 | 200 | 260 | 4 | 12 |
| LME8 | LME8-A | 8 | 25 | 16.5 | 1.1 | 15.2 | 260 | 400 | 4 | 20 |
| LME12 | LME12-A | 12 | 32 | 22.9 | 1.3 | 21 | 410 | 590 | 4 | 41 |
| LME16 | LME16-A | 16 | 36 | 24.9 | 1.3 | 24.9 | 770 | 1170 | 5 | 57 |
| LME20 | LME20-A | 20 | 45 | 31.5 | 1.6 | 30.3 | 860 | 1370 | 5 | 91 |
| LME25 | LME25-A | 25 | 58 | 44.1 | 1.85 | 37.5 | 980 | 1560 | 6 | 215 |
| LME30 | | 30 | 68 | 52.1 | 1.85 | 44.5 | 1560 | 2740 | 6 | 325 |
| LME40 | | 40 | 80 | 60.6 | 2.15 | 59 | 2150 | 4010 | 6 | 705 |
| LME50 | | 50 | 100 | 77.6 | 2.65 | 72 | 3820 | 7930 | 6 | 1130 |
| LME60 | | 60 | 125 | 101.7 | 3.15 | 86.5 | 4700 | 9990 | 6 | 2220 |

Note 1) Dynamic load rating is based on the nominal life of 50km.
In case of 100km, C on the table need to be divided by 1.26
Ex) LM12's 50km basis dynamic load rating C = 410N
LM12's 100km basis dynamic load rating C₁₀₀ = 410 / 1.26 = 325.40N
Note 2) Based on the weight of resin retainer
Note 3) Dimension : mm

LME_L LONG LINEAR BEARING

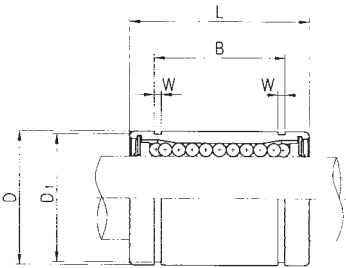
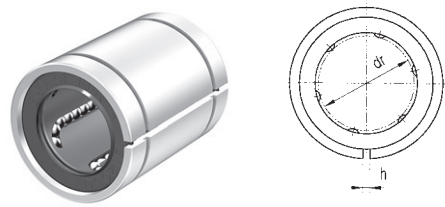


| | | | | | | | | |
|---|-----|----|---|----|---|---|---|---|
| European Standard Samick Linear Bearing | LME | 20 | L | UU | - | A | N | S |
| Nominal Shaft Diameter | | | | | | | | |
| Linear Bearing Long type (for high load) | | | | | | | | |
| Seal | | | | | | | | |
| Blank : No Seal U : One Side Seal UU : Both Side Seal | | | | | | | | |
| Retainer | | | | | | | | |
| Blank : Resin retainer(Standard) A : Steel retainer(High temperature) | | | | | | | | |
| Outer-sleeves (by corrosion resistance type) | | | | | | | | |
| Blank : No-plating(Standard) N : Electroless nickel plating R : Raydent treatment | | | | | | | | |
| Ball type (by corrosion resistance) | | | | | | | | |
| Blank : High carbon bearing steel ball (standard) S : Stainless steel ball | | | | | | | | |

| PART NUMBER | DIAMETER | | L | B | W | D ₁ | BASIC LOAD RATING(N) | | NO. OF BALL CIRCUIT | WEIGHT (g) |
|-------------|----------|-------|-----|-------|------|----------------|--------------------------|-------------|---------------------|------------|
| | Resin | Steel | | | | | d _r TOLERANCE | D TOLERANCE | | |
| LME8L | LME8L-A | 8 | 45 | 33 | 1.1 | 15.2 | 430 | 780 | 4 | 31 |
| LME12L | LME12L-A | 12 | 57 | 45.8 | 1.3 | 21 | 650 | 1200 | 4 | 80 |
| LME16L | LME16L-A | 16 | 70 | 49.8 | 1.3 | 24.9 | 1230 | 2350 | 5 | 145 |
| LME20L | LME20L-A | 20 | 80 | 61 | 1.6 | 30.3 | 1400 | 2750 | 5 | 180 |
| LME25L | LME25L-A | 25 | 112 | 82 | 1.85 | 38 | 1560 | 3140 | 6 | 440 |
| LME30L | | 30 | 123 | 104.2 | 1.85 | 44.5 | 2490 | 5490 | 6 | 580 |
| LME40L | | 40 | 154 | 121.2 | 2.15 | 59 | 3430 | 8040 | 6 | 1170 |
| LME50L | | 50 | 192 | 155.2 | 2.65 | 72 | 6080 | 15900 | 6 | 3100 |
| LME60L | | 60 | 211 | 170 | 3.15 | 86.5 | 7650 | 20000 | 6 | 3500 |

Note 1) Dynamic load rating is based on the nominal life of 50km.
In case of 100km, C on the table need to be divided by 1.26
Ex) LM12's 50km basis dynamic load rating C = 410N
LM12's 100km basis dynamic load rating C₁₀₀ = 410 / 1.26 = 325.40N
Note 2) Based on the weight of resin retainer
Note 3) Dimension : mm

LME_AJ ADJUSTABLE LINEAR BEARING



| | | | | | | | | | | | | |
|--|--|--|--|--|--|--|--|--|--|--|--|--|
| European Standard Samick Linear Bearing LME 20 UU AJ - A N S | | | | | | | | | | | | |
| Nominal Shaft Diameter | | | | | | | | | | | | |
| Seal Blank : No Seal U : One Side Seal UU : Both Side Seal | | | | | | | | | | | | |
| Linear Bearing Adjustable type | | | | | | | | | | | | |
| Retainer Blank : Resin retainer(Standard) A : Steel retainer(High temperature) | | | | | | | | | | | | |
| Outer-sleeves (by corrosion resistance type) Blank : No-plating(Standard) N : Electroless nickel plating R : Raydent treatment | | | | | | | | | | | | |
| Ball type (by corrosion resistance) Blank : High carbon bearing steel ball (standard) S : Stainless steel ball | | | | | | | | | | | | |

| PART NUMBER | DIAMETER | | L | B | W | D ₁ | h | BASIC LOAD RATING(N) | | NO. OF BALL ORQUIT | WEIGHT (g) | | |
|-------------|-----------|-------|----|----|-----|----------------|------|--------------------------|-------------|--------------------|------------|------------|-------------------------|
| | Resin | Steel | | | | | | d _r TOLERANCE | D TOLERANCE | | | DYNAMIC(C) | STATIC(C ₀) |
| LME5AJ | | | 5 | 12 | 22 | 14.5 | 1.1 | 11.5 | 1 | 200 | 260 | 4 | 12 |
| LME8AJ | LME8AJ-A | | 8 | 16 | 25 | 16.5 | 1.1 | 15.2 | 1 | 260 | 400 | 4 | 20 |
| LME12AJ | LME12AJ-A | | 12 | 22 | 32 | 22.9 | 1.3 | 21 | 1.5 | 410 | 590 | 4 | 41 |
| LME16AJ | LME16AJ-A | | 16 | 26 | 36 | 24.9 | 1.3 | 24.9 | 1.5 | 770 | 1170 | 5 | 57 |
| LME20AJ | LME20AJ-A | | 20 | 32 | 45 | 31.5 | 1.6 | 30.3 | 2 | 860 | 1370 | 5 | 91 |
| LME25AJ | LME25AJ-A | | 25 | 40 | 58 | 44.1 | 1.85 | 37.5 | 2 | 980 | 1560 | 6 | 215 |
| LME30AJ | | | 30 | 47 | 68 | 52.1 | 1.85 | 44.5 | 2 | 1560 | 2740 | 6 | 325 |
| LME40AJ | | | 40 | 62 | 80 | 60.6 | 2.15 | 59 | 3 | 2150 | 4010 | 6 | 705 |
| LME50AJ | | | 50 | 75 | 100 | 77.6 | 2.65 | 72 | 3 | 3820 | 7930 | 6 | 1130 |
| LME60AJ | | | 60 | 90 | 125 | 101.7 | 3.15 | 86.5 | 3 | 4700 | 9990 | 6 | 2220 |

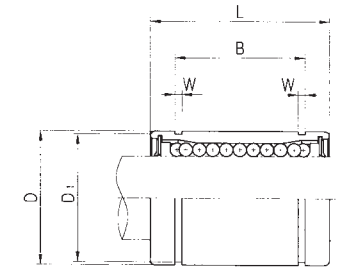
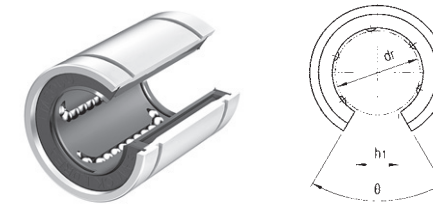
Note 1) Dynamic load rating is based on the nominal life of 50km.
In case of 100km, C on the table need to be divided by 1.26
Ex) LM12's 50km basis dynamic load rating C = 410N
LM12's 100km basis dynamic load rating C₁₀₀ = 410 / 1.26 = 325,40N

Note 2) Based on the weight of resin retainer

Note 3) Dimension : mm

Note 4) Outer diameter is the obtained value before the slotting process.

LME_OP OPEN LINEAR BEARING



| | | | | | | | | | | | | |
|--|--|--|--|--|--|--|--|--|--|--|--|--|
| European Standard Samick Linear Bearing LME 20 UU OP - A N S | | | | | | | | | | | | |
| Nominal Shaft Diameter | | | | | | | | | | | | |
| Seal Blank : No Seal U : One Side Seal UU : Both Side Seal | | | | | | | | | | | | |
| Linear Bushing Open type | | | | | | | | | | | | |
| Retainer Blank : Resin retainer(Standard) A : Steel retainer(High temperature) | | | | | | | | | | | | |
| Outer-sleeves (by corrosion resistance type) Blank : No-plating(Standard) N : Electroless nickel plating R : Raydent treatment | | | | | | | | | | | | |
| Ball type (by corrosion resistance) Blank : High carbon bearing steel ball (standard) S : Stainless steel ball | | | | | | | | | | | | |

| PART NUMBER | DIAMETER | | L | B | W | D ₁ | h ₁ | θ | BASIC LOAD RATING(N) | | NO. OF BALL ORQUIT | WEIGHT (g) | | |
|-------------|-----------|-------|----|----|-----|----------------|----------------|------|--------------------------|-------------|--------------------|------------|------------|-------------------------|
| | Resin | Steel | | | | | | | d _r TOLERANCE | D TOLERANCE | | | DYNAMIC(C) | STATIC(C ₀) |
| LME120P | LME120P-A | | 12 | 22 | 32 | 22.9 | 1.3 | 21 | 7.5 | 78° | 410 | 590 | 3 | 41 |
| LME160P | LME160P-A | | 16 | 26 | 36 | 24.9 | 1.3 | 24.9 | 10 | 78° | 770 | 1170 | 4 | 57 |
| LME200P | LME200P-A | | 20 | 32 | 45 | 31.5 | 1.6 | 30.3 | 10 | 60° | 860 | 1370 | 4 | 91 |
| LME250P | LME250P-A | | 25 | 40 | 58 | 44.1 | 1.85 | 37.5 | 12.5 | 60° | 980 | 1560 | 5 | 215 |
| LME300P | | | 30 | 47 | 68 | 52.1 | 1.85 | 44.5 | 12.5 | 50° | 1560 | 2740 | 5 | 325 |
| LME400P | | | 40 | 62 | 80 | 60.6 | 2.15 | 59 | 16.8 | 50° | 2150 | 4010 | 5 | 705 |
| LME500P | | | 50 | 75 | 100 | 77.6 | 2.65 | 72 | 21 | 50° | 3820 | 7930 | 5 | 1130 |
| LME600P | | | 60 | 90 | 125 | 101.7 | 3.15 | 86.5 | 27.2 | 54° | 4700 | 9990 | 5 | 2220 |

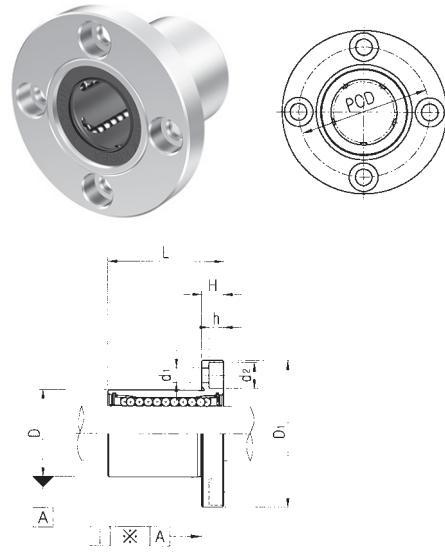
Note 1) Dynamic load rating is based on the nominal life of 50km.
In case of 100km, C on the table need to be divided by 1.26
Ex) LM12's 50km basis dynamic load rating C = 410N
LM12's 100km basis dynamic load rating C₁₀₀ = 410 / 1.26 = 325,40N

Note 2) Based on the weight of resin retainer

Note 3) Dimension : mm

Note 4) Outer diameter is the obtained value before the slotting process.

LMEF FLANGED LINEAR BEARING



| | | | | | | | | |
|--|--|---|----|----|---|---|---|---|
| European Standard Samick Circular Flanged Linear Bearing | | LMEF | 20 | UU | - | A | N | S |
| Nominal Shaft Diameter | | | | | | | | |
| Seal | | Blank : No Seal U : One Side Seal UU : Both Side Seal | | | | | | |
| Retainer | | Blank : Resin retainer(Standard) A : Steel retainer(High temperature) | | | | | | |
| Outer-sleeves (by corrosion resistance type) | | Blank : No-plating(Standard) N : Electroless nickel plating R : Raydent treatment | | | | | | |
| Ball type (by corrosion resistance) | | Blank : High carbon bearing steel ball (standard) S : Stainless steel ball | | | | | | |

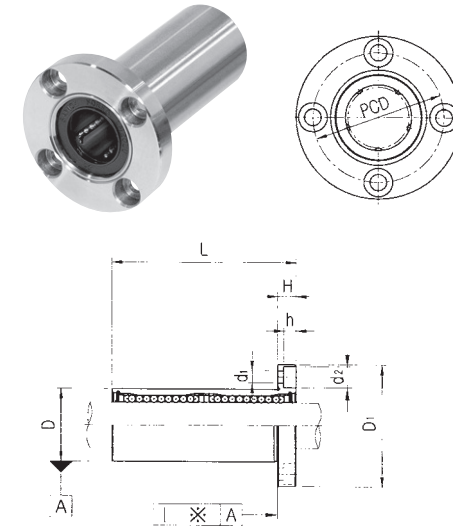
| PART NUMBER | | DIAMETER dr. TOLERANCE | D mm TOLERANCE | L | D ₁ | H | PCD | d ₁ | d ₂ | h | SQUARENESS ※(μm) | BASIC LOAD RATING(N) | | NO. OF BALL CIRCUIT | WEIGHT (gf) |
|-------------|----------|--|-----------------------------------|-----|----------------|----|-----|----------------|----------------|------|---------------------|----------------------|-------------------------|------------------------|----------------|
| Resin | Steel | | | | | | | | | | | DYNAMIC(C) | STATIC(C ₀) | | |
| LMEF8 | LMEF8-A | 8 ^{+0.003} ₀ | 16 ⁰ _{-0.003} | 25 | 32 | 5 | 24 | 3.4 | 6.5 | 3.3 | 12 | 260 | 400 | 4 | 44 |
| LMEF12 | LMEF12-A | 12 ^{+0.003} ₀ | 22 ⁰ _{-0.003} | 32 | 42 | 6 | 32 | 4.5 | 8 | 4.4 | 12 | 410 | 590 | 4 | 86 |
| LMEF16 | LMEF16-A | 16 ^{+0.003} _{-0.001} | 26 ⁰ _{-0.003} | 36 | 46 | 6 | 36 | 4.5 | 8 | 4.4 | 12 | 770 | 1170 | 5 | 120 |
| LMEF20 | LMEF20-A | 20 ^{+0.003} _{-0.001} | 32 ⁰ _{-0.003} | 45 | 54 | 8 | 43 | 5.5 | 9.5 | 5.4 | 15 | 860 | 1370 | 5 | 184 |
| LMEF25 | LMEF25-A | 25 ^{+0.011} _{-0.001} | 40 ⁰ _{-0.011} | 58 | 62 | 8 | 51 | 5.5 | 9.5 | 5.4 | 15 | 980 | 1560 | 6 | 335 |
| LMEF30 | | 30 ^{+0.011} _{-0.001} | 47 ⁰ _{-0.011} | 68 | 76 | 10 | 62 | 6.6 | 11 | 6.5 | 15 | 1560 | 2740 | 6 | 545 |
| LMEF40 | | 40 ^{+0.011} _{-0.001} | 62 ⁰ _{-0.011} | 80 | 98 | 13 | 80 | 9 | 14 | 8.6 | 20 | 2150 | 4010 | 6 | 1185 |
| LMEF50 | | 50 ^{+0.013} _{-0.002} | 75 ⁰ _{-0.013} | 100 | 112 | 13 | 94 | 9 | 14 | 8.6 | 20 | 3820 | 7930 | 6 | 1730 |
| LMEF60 | | 60 ^{+0.013} _{-0.002} | 90 ⁰ _{-0.013} | 125 | 134 | 18 | 112 | 11 | 17.5 | 10.8 | 25 | 4700 | 9990 | 6 | 3180 |

Note 1) Dynamic load rating is based on the nominal life of 50km.
In case of 100km, C on the table need to be divided by 1.26
Ex) LM12's 50km basis dynamic load rating C = 410N
LM12's 100km basis dynamic load rating C₁₀₀ = 410 / 1.26 = 325.40N

Note 2) Based on the weight of resin retainer

Note 3) Dimension : mm

LMEF_L FLANGED LINEAR BEARING



| | | | | | | | | | |
|--|--|---|----|---|----|---|---|---|---|
| European Standard Samick Circular Flanged Linear Bearing | | LMEF | 20 | L | UU | - | A | N | S |
| Nominal Shaft Diameter | | | | | | | | | |
| Linear Bearing Long type(for high load) | | | | | | | | | |
| Seal | | Blank : No Seal U : One Side Seal UU : Both Side Seal | | | | | | | |
| Retainer | | Blank : Resin retainer(Standard) A : Steel retainer(High temperature) | | | | | | | |
| Outer-sleeves (by corrosion resistance type) | | Blank : No-plating(Standard) N : Electroless nickel plating R : Raydent treatment | | | | | | | |
| Ball type (by corrosion resistance) | | Blank : High carbon bearing steel ball (standard) S : Stainless steel ball | | | | | | | |

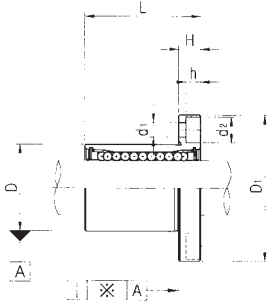
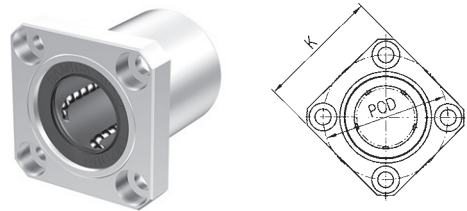
| PART NUMBER | | DIAMETER dr. TOLERANCE | D mm TOLERANCE | L | D ₁ | H | PCD | d ₁ | d ₂ | h | SQUARENESS ※(μm) | BASIC LOAD RATING(N) | | NO. OF BALL CIRCUIT | WEIGHT (gf) |
|-------------|-----------|--|-----------------------------------|-----|----------------|----|-----|----------------|----------------|------|---------------------|----------------------|-------------------------|------------------------|----------------|
| Resin | Steel | | | | | | | | | | | DYNAMIC(C) | STATIC(C ₀) | | |
| LMEF8L | LMEF8L-A | 8 ^{+0.003} _{-0.001} | 16 ⁰ _{-0.003} | 45 | 32 | 5 | 24 | 3.4 | 6.5 | 3.3 | 15 | 430 | 780 | 4 | 53 |
| LMEF12L | LMEF12L-A | 12 ^{+0.003} _{-0.001} | 22 ⁰ _{-0.003} | 57 | 42 | 6 | 32 | 4.5 | 8 | 4.4 | 15 | 650 | 1200 | 4 | 100 |
| LMEF16L | LMEF16L-A | 16 ^{+0.011} _{-0.001} | 26 ⁰ _{-0.011} | 70 | 46 | 6 | 36 | 4.5 | 8 | 4.4 | 15 | 1230 | 2350 | 5 | 187 |
| LMEF20L | LMEF20L-A | 20 ^{+0.011} _{-0.001} | 32 ⁰ _{-0.011} | 80 | 54 | 8 | 43 | 5.5 | 9.5 | 5.4 | 17 | 1400 | 2750 | 5 | 260 |
| LMEF25L | LMEF25L-A | 25 ^{+0.013} _{-0.002} | 40 ⁰ _{-0.013} | 112 | 62 | 8 | 51 | 5.5 | 9.5 | 5.4 | 17 | 1560 | 3140 | 6 | 515 |
| LMEF30L | | 30 ^{+0.013} _{-0.002} | 47 ⁰ _{-0.013} | 123 | 76 | 10 | 62 | 6.6 | 11 | 6.5 | 17 | 2490 | 5490 | 6 | 655 |
| LMEF40L | | 40 ^{+0.013} _{-0.002} | 62 ⁰ _{-0.013} | 154 | 98 | 13 | 80 | 9 | 14 | 8.6 | 20 | 3430 | 8040 | 6 | 1560 |
| LMEF50L | | 50 ^{+0.016} _{-0.004} | 75 ⁰ _{-0.016} | 192 | 112 | 13 | 94 | 9 | 14 | 8.6 | 20 | 6080 | 15900 | 6 | 3500 |
| LMEF60L | | 60 ^{+0.016} _{-0.004} | 90 ⁰ _{-0.016} | 211 | 134 | 18 | 112 | 11 | 17.5 | 10.8 | 25 | 7650 | 20000 | 6 | 4500 |

Note 1) Dynamic load rating is based on the nominal life of 50km.
In case of 100km, C on the table need to be divided by 1.26
Ex) LM12's 50km basis dynamic load rating C = 410N
LM12's 100km basis dynamic load rating C₁₀₀ = 410 / 1.26 = 325.40N

Note 2) Based on the weight of resin retainer

Note 3) Dimension : mm

LMEK FLANGED LINEAR BEARING



| | | | | | | | | |
|--|--|---|----|----|---|---|---|---|
| European Standard Samick Square Flanged Linear Bearing | | LMEK | 20 | UU | - | A | N | S |
| Nominal Shaft Diameter | | | | | | | | |
| Seal | | Blank : No Seal U : One Side Seal UU : Both Side Seal | | | | | | |
| Retainer | | Blank : Resin retainer(Standard) A : Steel retainer(High temperature) | | | | | | |
| Outer-sleeves (by corrosion resistance type) | | Blank : No-plating(Standard) N : Electroless nickel plating R : Raydent treatment | | | | | | |
| Ball type (by corrosion resistance) | | Blank : High carbon bearing steel ball (standard) S : Stainless steel ball | | | | | | |

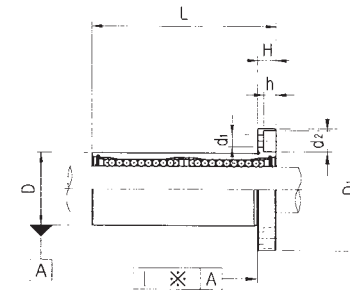
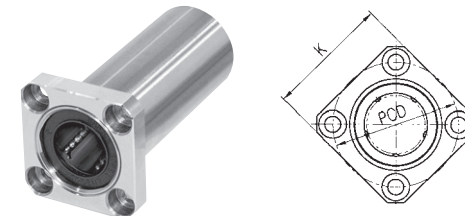
| PART NUMBER | | DIAMETER | | L | D ₁ | H | PCD | K | d ₁ | d ₂ | h | SQUARENESS ※(μm) | BASIC LOAD RATING(N) | | NO. OF BALL ORUIT | WEIGHT (gf) |
|-------------|----------|---------------|-------------|-----|----------------|----|-----|-----|----------------|----------------|------|---------------------|----------------------|-------------------------|-------------------|-------------|
| Resin | Steel | dr. TOLERANCE | D TOLERANCE | | | | | | | | | | DYNAMIC(C) | STATIC(C ₀) | | |
| LMEK8 | LMEK8-A | 8 | 16 | 25 | 32 | 5 | 24 | 25 | 3.4 | 6.5 | 3.3 | 12 | 260 | 400 | 4 | 44 |
| LMEK12 | LMEK12-A | 12 | 22 | 32 | 42 | 6 | 32 | 32 | 4.5 | 8 | 4.4 | 12 | 410 | 590 | 4 | 86 |
| LMEK16 | LMEK16-A | 16 | 26 | 36 | 46 | 6 | 36 | 35 | 4.5 | 8 | 4.4 | 12 | 770 | 1170 | 5 | 120 |
| LMEK20 | LMEK20-A | 20 | 32 | 45 | 54 | 8 | 43 | 42 | 5.5 | 9.5 | 5.4 | 15 | 860 | 1370 | 5 | 184 |
| LMEK25 | LMEK25-A | 25 | 40 | 58 | 62 | 8 | 51 | 50 | 5.5 | 9.5 | 5.4 | 15 | 980 | 1560 | 6 | 335 |
| LMEK30 | | 30 | 47 | 68 | 76 | 10 | 62 | 60 | 6.6 | 11 | 6.5 | 15 | 1560 | 2740 | 6 | 545 |
| LMEK40 | | 40 | 62 | 80 | 98 | 13 | 80 | 75 | 9 | 14 | 8.6 | 20 | 2150 | 4010 | 6 | 1185 |
| LMEK50 | | 50 | 75 | 100 | 112 | 13 | 94 | 88 | 9 | 14 | 8.6 | 20 | 3820 | 7930 | 6 | 1730 |
| LMEK60 | | 60 | 90 | 125 | 134 | 18 | 112 | 106 | 11 | 17.5 | 10.8 | 25 | 4700 | 9990 | 6 | 3180 |

Note 1) Dynamic load rating is based on the nominal life of 50km.
In case of 100km, C on the table need to be divided by 1.26
Ex) LM12's 50km basis dynamic load rating C = 410N
LM12's 100km basis dynamic load rating C₁₀₀ = 410 / 1.26 = 325.40N

Note 2) Based on the weight of resin retainer

Note 3) Dimension : mm

LMEK_L FLANGED LINEAR BEARING LONG



| | | | | | | | | | |
|--|--|---|----|---|----|---|---|---|---|
| European Standard Samick Square Flanged Linear Bearing | | LMEK | 20 | L | UU | - | A | N | S |
| Nominal Shaft Diameter | | | | | | | | | |
| Linear Bearing Long type(for high load) | | | | | | | | | |
| Seal | | Blank : No Seal U : One Side Seal UU : Both Side Seal | | | | | | | |
| Retainer | | Blank : Resin retainer(Standard) A : Steel retainer(High temperature) | | | | | | | |
| Outer-sleeves (by corrosion resistance type) | | Blank : No-plating(Standard) N : Electroless nickel plating R : Raydent treatment | | | | | | | |
| Ball type (by corrosion resistance) | | Blank : High carbon bearing steel ball (standard) S : Stainless steel ball | | | | | | | |

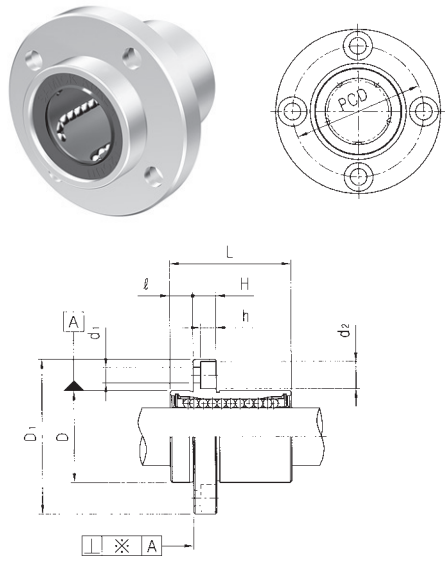
| PART NUMBER | | DIAMETER | | L | D ₁ | H | PCD | K | d ₁ | d ₂ | h | SQUARENESS ※(μm) | BASIC LOAD RATING(N) | | NO. OF BALL ORUIT | WEIGHT (gf) |
|-------------|-----------|---------------|-------------|-----|----------------|----|-----|-----|----------------|----------------|------|---------------------|----------------------|-------------------------|-------------------|-------------|
| Resin | Steel | dr. TOLERANCE | D TOLERANCE | | | | | | | | | | DYNAMIC(C) | STATIC(C ₀) | | |
| LMEK8L | LMEK8L-A | 8 | 16 | 45 | 32 | 5 | 24 | 25 | 3.4 | 6.5 | 3.3 | 15 | 430 | 780 | 4 | 53 |
| LMEK12L | LMEK12L-A | 12 | 22 | 57 | 42 | 6 | 32 | 32 | 4.5 | 8 | 4.4 | 15 | 650 | 1200 | 4 | 100 |
| LMEK16L | LMEK16L-A | 16 | 26 | 70 | 46 | 6 | 36 | 35 | 4.5 | 8 | 4.4 | 15 | 1230 | 2350 | 5 | 187 |
| LMEK20L | LMEK20L-A | 20 | 32 | 80 | 54 | 8 | 43 | 42 | 5.5 | 9.5 | 5.4 | 17 | 1400 | 2750 | 5 | 260 |
| LMEK25L | LMEK25L-A | 25 | 40 | 112 | 62 | 8 | 51 | 50 | 5.5 | 9.5 | 5.4 | 17 | 1560 | 3140 | 6 | 515 |
| LMEK30L | | 30 | 47 | 123 | 76 | 10 | 62 | 60 | 6.6 | 11 | 6.5 | 17 | 2490 | 5490 | 6 | 655 |
| LMEK40L | | 40 | 62 | 154 | 98 | 13 | 80 | 75 | 9 | 14 | 8.6 | 20 | 3430 | 8040 | 6 | 1560 |
| LMEK50L | | 50 | 75 | 192 | 112 | 13 | 94 | 88 | 9 | 14 | 8.6 | 20 | 6080 | 15900 | 6 | 3500 |
| LMEK60L | | 60 | 90 | 211 | 134 | 18 | 112 | 106 | 11 | 17.5 | 10.8 | 25 | 7650 | 20000 | 6 | 4500 |

Note 1) Dynamic load rating is based on the nominal life of 50km.
In case of 100km, C on the table need to be divided by 1.26
Ex) LM12 s 50km basis dynamic load rating C = 410N
LM12 s 100km basis dynamic load rating C₁₀₀ = 410 / 1.26 = 325.40N

Note 2) Based on the weight of resin retainer

Note 3) Dimension : mm

LMEFP FLANGED LINEAR BEARING

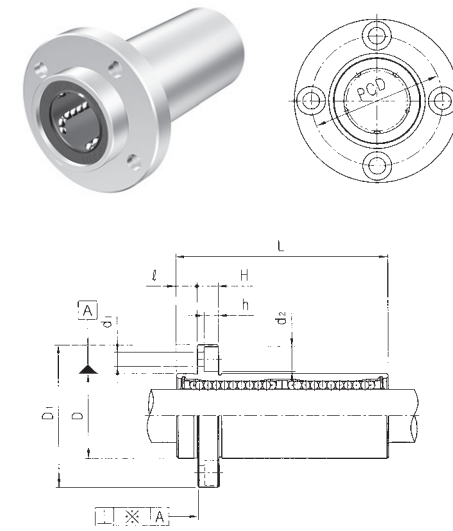


| | | | | | | | |
|--|---|----|----|---|---|---|---|
| European Standard Samick Circular Flanged Linear Bearing | LMEFP | 20 | UU | - | A | N | S |
| Nominal Shaft Diameter | | | | | | | |
| Seal | Blank : No Seal U : One Side Seal UU : Both Side Seal | | | | | | |
| Retainer | Blank : Resin retainer(Standard) A : Steel retainer(High temperature) | | | | | | |
| Outer-sleeves (by corrosion resistance type) | Blank : No-plating(Standard) N : Electroless nickel plating R : Raydent treatment | | | | | | |
| Ball type (by corrosion resistance) | Blank : High carbon bearing steel ball (standard) S : Stainless steel ball | | | | | | |

| PART NUMBER | | DIAMETER | | L | D _i | ℓ | H | PCD | d ₁ | d ₂ | h | SQUARENESS ※(μm) | BASIC LOAD RATING(N) | | NO. OF BALL CIRCUIT | WEIGHT (g) | | |
|-------------|-----------|---------------|----------------------|----|----------------|-----|-----|-----|----------------|----------------|-----|---------------------|----------------------|-------------------------|---------------------|------------|---|------|
| Resin | Steel | dr. TOLERANCE | mm TOLERANCE | | | | | | | | | | DYNAMIC(C) | STATIC(C ₀) | | | | |
| LMEFP8 | LMEFP8-A | 8 | $^{+0.008}_0$ | 16 | $^0_{-0.008}$ | 25 | 32 | 5 | 5 | 24 | 3.4 | 6.5 | 3.3 | 12 | 260 | 400 | 4 | 44 |
| LMEFP12 | LMEFP12-A | 12 | 0_0 | 22 | 0_0 | 32 | 42 | 6 | 6 | 32 | 4.5 | 8 | 4.4 | 12 | 410 | 590 | 4 | 86 |
| LMEFP16 | LMEFP16-A | 16 | $^{+0.009}_{-0.001}$ | 26 | $^{-0.009}_0$ | 36 | 46 | 6 | 6 | 36 | 4.5 | 8 | 4.4 | 12 | 770 | 1170 | 5 | 120 |
| LMEFP20 | LMEFP20-A | 20 | $^{+0.009}_{-0.001}$ | 32 | 0_0 | 45 | 54 | 8 | 8 | 43 | 5.5 | 9.5 | 5.4 | 15 | 860 | 1370 | 5 | 184 |
| LMEFP25 | LMEFP25-A | 25 | $^{+0.011}_{-0.001}$ | 40 | $^{-0.011}_0$ | 58 | 62 | 8 | 8 | 51 | 5.5 | 9.5 | 5.4 | 15 | 980 | 1560 | 6 | 335 |
| LMEFP30 | | 30 | $^{+0.011}_{-0.001}$ | 47 | 0_0 | 68 | 76 | 10 | 10 | 62 | 6.6 | 11 | 6.5 | 15 | 1560 | 2740 | 6 | 545 |
| LMEFP40 | | 40 | 0_0 | 62 | 0_0 | 80 | 98 | 13 | 13 | 80 | 9 | 14 | 8.6 | 20 | 2150 | 4010 | 6 | 1185 |
| LMEFP50 | | 50 | $^{+0.013}_{-0.002}$ | 75 | $^{-0.013}_0$ | 100 | 112 | 13 | 13 | 94 | 9 | 14 | 8.6 | 20 | 3820 | 7930 | 6 | 1730 |
| LMEFP60 | | 60 | $^0_{-0.015}$ | 90 | $^0_{-0.015}$ | 125 | 134 | 18 | 18 | 112 | 11 | 17.5 | 10.8 | 25 | 4700 | 9990 | 6 | 3180 |

Note 1) Dynamic load rating is based on the nominal life of 50km.
In case of 100km, C on the table need to be divided by 1.26
Ex) LM12's 50km basis dynamic load rating C = 410N
LM12's 100km basis dynamic load rating C₁₀₀ = 410 / 1.26 = 325.40N
Note 2) Based on the weight of resin retainer
Note 3) Dimension : mm

LMEFP_L FLANGED LINEAR BEARING LONG

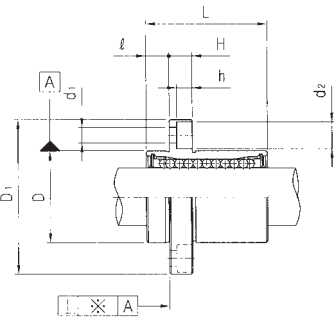
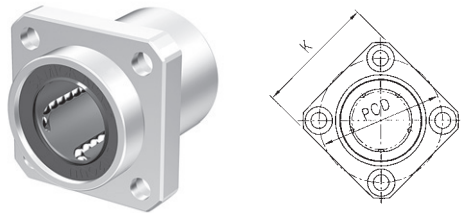


| | | | | | | | | |
|--|---|----|---|----|---|---|---|---|
| European Standard Samick Circular Flanged Linear Bearing | LMEFP | 20 | L | UU | - | A | N | S |
| Nominal Shaft Diameter | | | | | | | | |
| Linear Bearing Long type(for high load) | | | | | | | | |
| Seal | Blank : No Seal U : One Side Seal UU : Both Side Seal | | | | | | | |
| Retainer | Blank : Resin retainer(Standard) A : Steel retainer(High temperature) | | | | | | | |
| Outer-sleeves (by corrosion resistance type) | Blank : No-plating(Standard) N : Electroless nickel plating R : Raydent treatment | | | | | | | |
| Ball type (by corrosion resistance) | Blank : High carbon bearing steel ball (standard) S : Stainless steel ball | | | | | | | |

| PART NUMBER | | DIAMETER | | L | D _i | ℓ | H | PCD | d ₁ | d ₂ | h | SQUARENESS ※(μm) | BASIC LOAD RATING(N) | | NO. OF BALL CIRCUIT | WEIGHT (g) | | |
|-------------|------------|---------------|----------------------|----|----------------|-----|-----|-----|----------------|----------------|-----|---------------------|----------------------|-------------------------|---------------------|------------|---|------|
| Resin | Steel | dr. TOLERANCE | mm TOLERANCE | | | | | | | | | | DYNAMIC(C) | STATIC(C ₀) | | | | |
| LMEFP8L | LMEFP8L-A | 8 | $^{+0.009}_{-0.001}$ | 16 | $^0_{-0.009}$ | 45 | 32 | 5 | 5 | 24 | 3.4 | 6.5 | 3.3 | 15 | 430 | 780 | 4 | 53 |
| LMEFP12L | LMEFP12L-A | 12 | $^{+0.009}_{-0.001}$ | 22 | 0_0 | 57 | 42 | 6 | 6 | 32 | 4.5 | 8 | 4.4 | 15 | 650 | 1200 | 4 | 100 |
| LMEFP16L | LMEFP16L-A | 16 | $^{+0.011}_{-0.001}$ | 26 | $^{-0.011}_0$ | 70 | 46 | 6 | 6 | 36 | 4.5 | 8 | 4.4 | 15 | 1230 | 2350 | 5 | 187 |
| LMEFP20L | LMEFP20L-A | 20 | $^{+0.011}_{-0.001}$ | 32 | 0_0 | 80 | 54 | 8 | 8 | 43 | 5.5 | 9.5 | 5.4 | 17 | 1400 | 2750 | 5 | 260 |
| LMEFP25L | LMEFP25L-A | 25 | $^{+0.013}_{-0.002}$ | 40 | $^{-0.013}_0$ | 112 | 62 | 8 | 8 | 51 | 5.5 | 9.5 | 5.4 | 17 | 1560 | 3140 | 6 | 515 |
| LMEFP30L | | 30 | $^{+0.013}_{-0.002}$ | 47 | 0_0 | 123 | 76 | 10 | 10 | 62 | 6.6 | 11 | 6.5 | 17 | 2490 | 5490 | 6 | 655 |
| LMEFP40L | | 40 | 0_0 | 62 | 0_0 | 154 | 98 | 13 | 13 | 80 | 9 | 14 | 8.6 | 20 | 3430 | 8040 | 6 | 1560 |
| LMEFP50L | | 50 | $^{+0.016}_{-0.004}$ | 75 | $^{-0.016}_0$ | 192 | 112 | 13 | 13 | 94 | 9 | 14 | 8.6 | 20 | 6080 | 15900 | 6 | 3500 |
| LMEFP60L | | 60 | $^0_{-0.020}$ | 90 | $^0_{-0.020}$ | 211 | 134 | 18 | 18 | 112 | 11 | 17.5 | 10.8 | 25 | 7650 | 20000 | 6 | 4500 |

Note 1) Dynamic load rating is based on the nominal life of 50km.
In case of 100km, C on the table need to be divided by 1.26
Ex) LM12's 50km basis dynamic load rating C = 410N
LM12's 100km basis dynamic load rating C₁₀₀ = 410 / 1.26 = 325.40N
Note 2) Based on the weight of resin retainer
Note 3) Dimension : mm

LMEKP FLANGED LINEAR BEARING

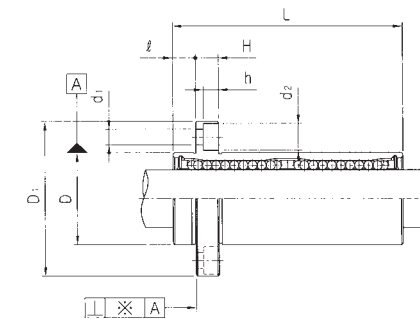
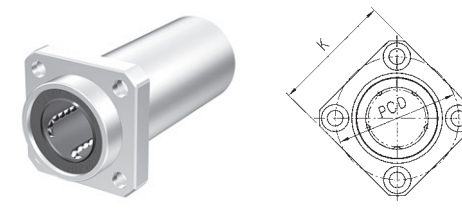


| | | | | | | | |
|--|--|---|----|---|---|---|---|
| European Standard Samick Square Flanged Linear Bearing LMEKP | | 20 | UU | - | A | N | S |
| Nominal Shaft Diameter | | | | | | | |
| Seal | | Blank : No Seal U : One Side Seal UU : Both Side Seal | | | | | |
| Retainer | | Blank : Resin retainer(Standard) A : Steel retainer(High temperature) | | | | | |
| Outer-sleeves (by corrosion resistance type) | | Blank : No-plating(Standard) N : Electroless nickel plating R : Raydent treatment | | | | | |
| Ball type (by corrosion resistance) | | Blank : High carbon bearing steel ball (standard) S : Stainless steel ball | | | | | |

| PART NUMBER | | DIAMETER D dr. TOLERANCE | L | D ₁ | l | H | PCD | K | d ₁ | d ₂ | h | SQUARENESS % (μm) | BASIC LOAD RATING(N) | | NO. OF BALLS | WEIGHT (g) | |
|-------------|-----------|--------------------------------|----|----------------|-----|----|-----|-----|----------------|----------------|------|----------------------|----------------------|-------------------------|--------------|------------|------|
| Resin | Steel | | | | | | | | | | | | DYNAMIC(C) | STATIC(C ₀) | | | |
| LMEKP8 | LMEKP8-A | 8 | 16 | 25 | 32 | 5 | 5 | 24 | 25 | 3.4 | 6.5 | 3.3 | 12 | 260 | 400 | 4 | 44 |
| LMEKP12 | LMEKP12-A | 12 | 22 | 32 | 42 | 6 | 6 | 32 | 32 | 4.5 | 8 | 4.4 | 12 | 410 | 590 | 4 | 86 |
| LMEKP16 | LMEKP16-A | 16 | 26 | 36 | 46 | 6 | 6 | 36 | 35 | 4.5 | 8 | 4.4 | 12 | 770 | 1170 | 5 | 120 |
| LMEKP20 | LMEKP20-A | 20 | 32 | 45 | 54 | 8 | 8 | 43 | 42 | 5.5 | 9.5 | 5.4 | 15 | 860 | 1370 | 5 | 184 |
| LMEKP25 | LMEKP25-A | 25 | 40 | 58 | 62 | 8 | 8 | 51 | 50 | 5.5 | 9.5 | 5.4 | 15 | 980 | 1560 | 6 | 335 |
| LMEKP30 | | 30 | 47 | 68 | 76 | 10 | 10 | 62 | 60 | 6.6 | 11 | 6.5 | 15 | 1560 | 2740 | 6 | 545 |
| LMEKP40 | | 40 | 62 | 80 | 98 | 13 | 13 | 80 | 75 | 9 | 14 | 8.6 | 20 | 2150 | 4010 | 6 | 1185 |
| LMEKP50 | | 50 | 75 | 100 | 112 | 13 | 13 | 94 | 88 | 9 | 14 | 8.6 | 20 | 3820 | 7930 | 6 | 1730 |
| LMEKP60 | | 60 | 90 | 125 | 134 | 18 | 18 | 112 | 106 | 11 | 17.5 | 10.8 | 25 | 4700 | 9990 | 6 | 3180 |

Note 1) Dynamic load rating is based on the nominal life of 50km.
In case of 100km, C on the table need to be divided by 1.26
Ex) LM12's 50km basis dynamic load rating C = 410N
LM12's 100km basis dynamic load rating C₁₀₀ = 410 / 1.26 = 325.40N
Note 2) Based on the weight of resin retainer
Note 3) Dimension : mm

LMEKP_L FLANGED LINEAR BEARING LONG

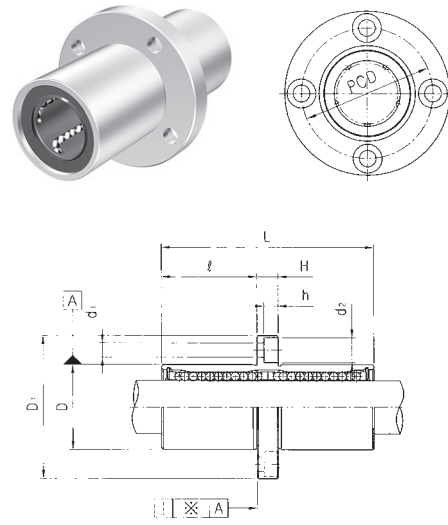


| | | | | | | | | |
|--|--|---|---|----|---|---|---|---|
| European Standard Samick Square Flanged Linear Bearing LMEKP | | 20 | L | UU | - | A | N | S |
| Nominal Shaft Diameter | | | | | | | | |
| Linear Bearing Long type(for high load) | | | | | | | | |
| Seal | | Blank : No Seal U : One Side Seal UU : Both Side Seal | | | | | | |
| Retainer | | Blank : Resin retainer(Standard) A : Steel retainer(High temperature) | | | | | | |
| Outer-sleeves (by corrosion resistance type) | | Blank : No-plating(Standard) N : Electroless nickel plating R : Raydent treatment | | | | | | |
| Ball type (by corrosion resistance) | | Blank : High carbon bearing steel ball (standard) S : Stainless steel ball | | | | | | |

| PART NUMBER | | DIAMETER D dr. TOLERANCE | L | D ₁ | l | H | PCD | K | d ₁ | d ₂ | h | SQUARENESS % (μm) | BASIC LOAD RATING(N) | | NO. OF BALLS | WEIGHT (g) | |
|-------------|------------|--------------------------------|----|----------------|-----|----|-----|-----|----------------|----------------|------|----------------------|----------------------|-------------------------|--------------|------------|------|
| Resin | Steel | | | | | | | | | | | | DYNAMIC(C) | STATIC(C ₀) | | | |
| LMEKP8L | LMEKP8L-A | 8 | 16 | 45 | 32 | 5 | 5 | 24 | 25 | 3.4 | 6.5 | 3.3 | 15 | 430 | 780 | 4 | 53 |
| LMEKP12L | LMEKP12L-A | 12 | 22 | 57 | 42 | 6 | 6 | 32 | 32 | 4.5 | 8 | 4.4 | 15 | 650 | 1200 | 4 | 100 |
| LMEKP16L | LMEKP16L-A | 16 | 26 | 70 | 46 | 6 | 6 | 36 | 35 | 4.5 | 8 | 4.4 | 15 | 1230 | 2350 | 5 | 187 |
| LMEKP20L | LMEKP20L-A | 20 | 32 | 80 | 54 | 8 | 8 | 43 | 42 | 5.5 | 9.5 | 5.4 | 17 | 1400 | 2750 | 5 | 260 |
| LMEKP25L | LMEKP25L-A | 25 | 40 | 112 | 62 | 8 | 8 | 51 | 50 | 5.5 | 9.5 | 5.4 | 17 | 1560 | 3140 | 6 | 515 |
| LMEKP30L | | 30 | 47 | 123 | 76 | 10 | 10 | 62 | 60 | 6.6 | 11 | 6.5 | 17 | 2490 | 5490 | 6 | 655 |
| LMEKP40L | | 40 | 62 | 154 | 98 | 13 | 13 | 80 | 75 | 9 | 14 | 8.6 | 20 | 3430 | 8040 | 6 | 1560 |
| LMEKP50L | | 50 | 75 | 192 | 112 | 13 | 13 | 94 | 88 | 9 | 14 | 8.6 | 20 | 6080 | 15900 | 6 | 3500 |
| LMEKP60L | | 60 | 90 | 211 | 134 | 18 | 18 | 112 | 106 | 11 | 17.5 | 10.8 | 25 | 7650 | 20000 | 6 | 4500 |

Note 1) Dynamic load rating is based on the nominal life of 50km.
In case of 100km, C on the table need to be divided by 1.26
Ex) LM12's 50km basis dynamic load rating C = 410N
LM12's 100km basis dynamic load rating C₁₀₀ = 410 / 1.26 = 325.40N
Note 2) Based on the weight of resin retainer
Note 3) Dimension : mm

LMEFM FLANGED LINEAR BEARING LONG

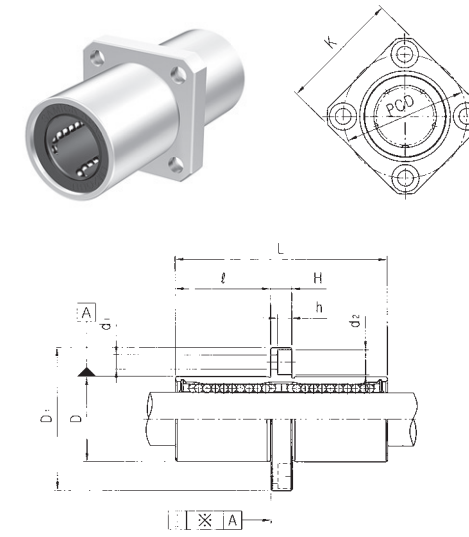


| | | | | | | | |
|--|--------------|---|----|---|---|---|---|
| European Standard Samick Circular Mid-Flanged Linear Bearing | LMEFM | 20 | UU | - | A | N | S |
| Nominal Shaft Diameter | | | | | | | |
| Seal | | Blank : No Seal U : One Side Seal UU : Both Side Seal | | | | | |
| Retainer | | Blank : Resin retainer(Standard) A : Steel retainer(High temperature) | | | | | |
| Outer-sleeves (by corrosion resistance type) | | Blank : No-plating(Standard) N : Electroless nickel plating R : Raydent treatment | | | | | |
| Ball type (by corrosion resistance) | | Blank : High carbon bearing steel ball (standard) S : Stainless steel ball | | | | | |

| PART NUMBER | | DIAMETER D | | L | D ₁ | ℓ | H | PCD | d ₁ | d ₂ | h | SQUARENESS ※(μm) | BASIC LOAD RATING(N) | | NO. OF BALL | WEIGHT (g) |
|-------------|-----------|---------------|--------------|-----|----------------|------|----|-----|----------------|----------------|------|------------------|----------------------|-------------------------|-------------|------------|
| Resin | Steel | dr. TOLERANCE | mm TOLERANCE | | | | | | | | | | DYNAMIC(C) | STATIC(C ₀) | | |
| LMEFM8 | LMEFM8-A | 8 | 16 | 45 | 32 | 20 | 5 | 24 | 3.4 | 6.5 | 3.3 | 15 | 430 | 780 | 4 | 53 |
| LMEFM12 | LMEFM12-A | 12 | 22 | 57 | 42 | 25.5 | 6 | 32 | 4.5 | 8 | 4.4 | 15 | 650 | 1200 | 4 | 100 |
| LMEFM16 | LMEFM16-A | 16 | 26 | 70 | 46 | 32 | 6 | 36 | 4.5 | 8 | 4.4 | 15 | 1230 | 2350 | 5 | 187 |
| LMEFM20 | LMEFM20-A | 20 | 32 | 80 | 54 | 36 | 8 | 43 | 5.5 | 9.5 | 5.4 | 17 | 1400 | 2750 | 5 | 260 |
| LMEFM25 | LMEFM25-A | 25 | 40 | 112 | 62 | 52 | 8 | 51 | 5.5 | 9.5 | 5.4 | 17 | 1560 | 3140 | 6 | 515 |
| LMEFM30 | | 30 | 47 | 123 | 76 | 56.5 | 10 | 62 | 6.6 | 11 | 6.5 | 17 | 2400 | 5490 | 6 | 655 |
| LMEFM40 | | 40 | 62 | 154 | 98 | 70.5 | 13 | 80 | 9 | 14 | 8.6 | 20 | 3430 | 8040 | 6 | 1560 |
| LMEFM50 | | 50 | 75 | 192 | 112 | 89.5 | 13 | 94 | 9 | 14 | 8.6 | 20 | 6080 | 15900 | 6 | 3500 |
| LMEFM60 | | 60 | 90 | 211 | 134 | 96.5 | 18 | 112 | 11 | 17.5 | 10.8 | 25 | 7650 | 20000 | 6 | 4500 |

Note 1) Dynamic load rating is based on the nominal life of 50km.
 In case of 100km, C on the table need to be divided by 1.26
 Ex) LM12's 50km basis dynamic load rating C = 410N
 LM12's 100km basis dynamic load rating C₁₀₀ = 410 / 1.26 = 325.40N
 Note 2) Based on the weight of resin retainer
 Note 3) Dimension : mm

LMEKM FLANGED LINEAR BEARING LONG



| | | | | | | | |
|--|--------------|---|----|---|---|---|---|
| European Standard Samick Square Mid-Flanged Linear Bearing | LMEKM | 20 | UU | - | A | N | S |
| Nominal Shaft Diameter | | | | | | | |
| Seal | | Blank : No Seal U : One Side Seal UU : Both Side Seal | | | | | |
| Retainer | | Blank : Resin retainer(Standard) A : Steel retainer(High temperature) | | | | | |
| Outer-sleeves (by corrosion resistance type) | | Blank : No-plating(Standard) N : Electroless nickel plating R : Raydent treatment | | | | | |
| Ball type (by corrosion resistance) | | Blank : High carbon bearing steel ball (standard) S : Stainless steel ball | | | | | |

| PART NUMBER | | DIAMETER D | | L | D ₁ | ℓ | H | PCD | K | d ₁ | d ₂ | h | SQUARENESS ※(μm) | BASIC LOAD RATING(N) | | NO. OF BALL | WEIGHT (g) |
|-------------|-----------|---------------|--------------|-----|----------------|------|----|-----|-----|----------------|----------------|------|------------------|----------------------|-------------------------|-------------|------------|
| Resin | Steel | dr. TOLERANCE | mm TOLERANCE | | | | | | | | | | | DYNAMIC(C) | STATIC(C ₀) | | |
| LMEKM8 | LMEKM8-A | 8 | 16 | 45 | 32 | 20 | 5 | 24 | 25 | 3.4 | 6.5 | 3.3 | 15 | 430 | 780 | 4 | 53 |
| LMEKM12 | LMEKM12-A | 12 | 22 | 57 | 42 | 25.5 | 6 | 32 | 32 | 4.5 | 8 | 4.4 | 15 | 650 | 1200 | 4 | 100 |
| LMEKM16 | LMEKM16-A | 16 | 26 | 70 | 46 | 32 | 6 | 36 | 35 | 4.5 | 8 | 4.4 | 15 | 1230 | 2350 | 5 | 187 |
| LMEKM20 | LMEKM20-A | 20 | 32 | 80 | 54 | 36 | 8 | 43 | 42 | 5.5 | 9.5 | 5.4 | 17 | 1400 | 2750 | 5 | 260 |
| LMEKM25 | LMEKM25-A | 25 | 40 | 112 | 62 | 52 | 8 | 51 | 50 | 5.5 | 9.5 | 5.4 | 17 | 1560 | 3140 | 6 | 515 |
| LMEKM30 | | 30 | 47 | 123 | 76 | 56.5 | 10 | 62 | 60 | 6.6 | 11 | 6.5 | 17 | 2490 | 5490 | 6 | 655 |
| LMEKM40 | | 40 | 62 | 154 | 98 | 70.5 | 13 | 80 | 75 | 9 | 14 | 8.6 | 20 | 3430 | 8040 | 6 | 1560 |
| LMEKM50 | | 50 | 75 | 192 | 112 | 89.5 | 13 | 94 | 88 | 9 | 14 | 8.6 | 20 | 6080 | 15900 | 6 | 3500 |
| LMEKM60 | | 60 | 90 | 211 | 134 | 96.5 | 18 | 112 | 106 | 11 | 17.5 | 10.8 | 25 | 7650 | 20000 | 6 | 4500 |

Note 1) Dynamic load rating is based on the nominal life of 50km.
 In case of 100km, C on the table need to be divided by 1.26
 Ex) LM12's 50km basis dynamic load rating C = 410N
 LM12's 100km basis dynamic load rating C₁₀₀ = 410 / 1.26 = 325.40N
 Note 2) Based on the weight of resin retainer
 Note 3) Dimension : mm