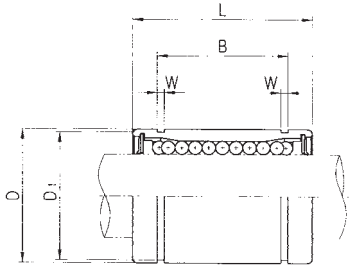
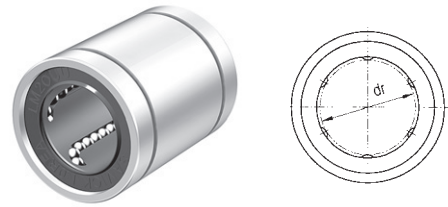


LM CLOSED LINEAR BEARING

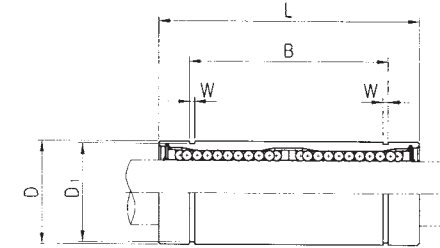
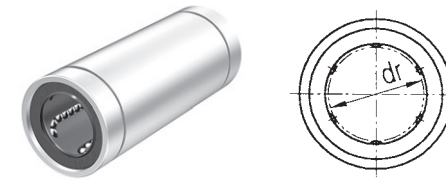


<b>Samick Linear Bearing</b>	<b>LM</b>	<b>20</b>	<b>UU</b>	<b>-</b>	<b>A</b>	<b>N</b>	<b>S</b>
<b>Nominal Shaft Diameter</b>							
<b>Seal</b>							
Blank : No Seal U : One Side Seal UU : Both Side Seal							
<b>Retainer</b>							
Blank : Resin retainer(Standard) A : Steel retainer(High temperature)							
<b>Outer-sleeves (by corrosion resistance type)</b>							
Blank : No-plating(Standard) N : Electroless nickel plating R : Raydent treatment							
<b>Ball type (by corrosion resistance)</b>							
Blank : High carbon bearing steel ball (standard) S : Stainless steel ball							

PART NUMBER	Resin	Steel	DIAMETER		OUTER DIAMETER		L	B	W	D <sub>i</sub>	BASIC LOAD RATING(N)		NO. OF BALL	WEIGHT (g)
			dr.	TOLERANCE	D	TOLERANCE					DYNAMIC(C)	STATIC(C <sub>0</sub> )		
LM5	LM5-A	5	-0.008	10	-0.008	15	10.2	1.1	9.6	167	206	4	4	
LM6	LM6-A	6		12		19	13.5	1.1	11.5	200	260	4	8	
LM8S	LM8S-A	8		15	-0.011	17	11.5	1.1	14.3	170	220	4	11	
LM8	LM8-A	8		15		24	17.5	1.1	14.3	260	400	4	16	
LM10	LM10-A	10	-0.009	19		29	22.0	1.3	18	370	540	4	30	
LM12	LM12-A	12		21	-0.013	30	23.0	1.3	20	410	590	4	31.5	
LM13	LM13-A	13		23		32	23.0	1.3	22	500	770	4	43	
LM16	LM16-A	16		28		37	26.5	1.6	27	770	1170	5	69	
LM20	LM20-A	20		32		42	30.5	1.6	30.5	860	1370	5	87	
LM25	LM25-A	25	-0.010	40	-0.016	59	41.0	1.85	38	980	1560	6	220	
LM30		30		45		64	44.5	1.85	43	1560	2740	6	250	
LM35		35		52		70	49.5	2.1	49	1660	3130	6	390	
LM40		40	-0.012	60	-0.019	80	60.5	2.1	57	2150	4010	6	585	
LM50		50		80		100	74.0	2.6	76.5	3820	7930	6	1580	
LM60		60	-0.015	90	-0.022	110	85.0	3.15	86.5	4700	9990	6	2000	

Note 1) Dynamic load rating is based on the nominal life of 50km.  
In case of 100km, C on the table need to be divided by 1.26  
Ex) LM12's 50km basis dynamic load rating C = 410N  
LM12's 100km basis dynamic load rating C<sub>100</sub> = 410 / 1.26 = 325.40N  
Note 2) Based on the weight of resin retainer  
Note 3) Dimension : mm

LM\_L LONG LINEAR BEARING

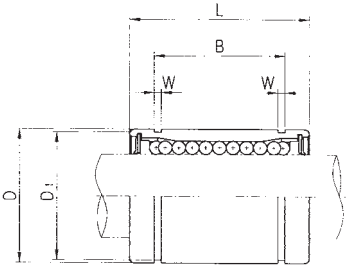
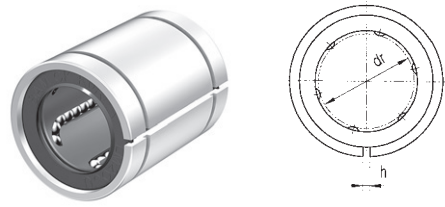


<b>Samick Linear Bearing</b>	<b>LM</b>	<b>20</b>	<b>L</b>	<b>UU</b>	<b>-</b>	<b>A</b>	<b>N</b>	<b>S</b>
<b>Nominal Shaft Diameter</b>								
<b>Linear Bearing Long type (for high load)</b>								
<b>Seal</b>								
Blank : No Seal U : One Side Seal UU : Both Side Seal								
<b>Retainer</b>								
Blank : Resin retainer(Standard) A : Steel retainer(High temperature)								
<b>Outer-sleeves (by corrosion resistance type)</b>								
Blank : No-plating(Standard) N : Electroless nickel plating R : Raydent treatment								
<b>Ball type (by corrosion resistance)</b>								
Blank : High carbon bearing steel ball (standard) S : Stainless steel ball								

PART NUMBER	Resin	Steel	DIAMETER		OUTER DIAMETER		L	B	W	D <sub>i</sub>	BASIC LOAD RATING(N)		NO. OF BALL	WEIGHT (g)
			dr.	TOLERANCE	D	TOLERANCE					DYNAMIC(C)	STATIC(C <sub>0</sub> )		
LM6L	LM6L-A	6		12	0	35	27	1.1	11.5	320	520	4	16	
LM8L	LM8L-A	8		15	-0.013	45	35	1.1	14.3	430	780	4	31	
LM10L	LM10L-A	10		19		55	44	1.3	18	580	1100	4	62	
LM12L	LM12L-A	12	-0.010	21		57	46	1.3	20	650	1200	4	80	
LM13L	LM13L-A	13		23	-0.016	61	46	1.3	22	810	1570	4	90	
LM16L	LM16L-A	16		28		70	53	1.6	27	1230	2350	5	145	
LM20L	LM20L-A	20		32		80	61	1.6	30.5	1400	2750	5	180	
LM25L	LM25L-A	25	-0.012	40	-0.019	112	82	1.85	38	1560	3140	6	440	
LM30L		30		45		123	89	1.85	43	2490	5490	6	580	
LM35L		35		52		135	99	2.1	49	2650	6470	6	795	
LM40L		40	-0.015	60	-0.022	154	121	2.1	57	3430	8040	6	1170	
LM50L		50		80		192	148	2.6	76.5	6080	15900	6	3100	
LM60L		60	-0.020	90	-0.025	211	170	3.15	86.5	7650	20000	6	3500	

Note 1) Dynamic load rating is based on the nominal life of 50km.  
In case of 100km, C on the table need to be divided by 1.26  
Ex) LM12's 50km basis dynamic load rating C = 410N  
LM12's 100km basis dynamic load rating C<sub>100</sub> = 410 / 1.26 = 325.40N  
Note 2) Based on the weight of resin retainer  
Note 3) Dimension : mm

**LM\_AJ** ADJUSTABLE LINEAR BEARING



Samick Linear Bearing LM 20 UU AJ - A N S												
<b>Nominal Shaft Diameter</b>												
<b>Seal</b> Blank : No Seal U : One Side Seal UU : Both Side Seal												
<b>Linear Bearing Adjustable type</b>												
<b>Retainer</b> Blank : Resin retainer(Standard) A : Steel retainer(High temperature)												
<b>Outer-sleeves (by corrosion resistance type)</b> Blank : No-plating(Standard) N : Electroless nickel plating R : Raydent treatment												
<b>Ball type (by corrosion resistance)</b> Blank : High carbon bearing steel ball (standard) S : Stainless steel ball												

PART NUMBER		DIAMETER		OUTER DIAMETER		L	B	W	h	D <sub>1</sub>	BASIC LOAD RATING(N)		NO. OF	WEIGHT	
Resin	Steel	dr.	TOLERANCE	D	TOLERANCE						DYNAMIC(C)	STATIC(C <sub>0</sub> )	BALL	ORBIT	(g)
LM6 AJ	LM6 AJ-A	6		12		19	13.5	1.1	1	11.5	200	260	4	8	
LM8S AJ	LM8S AJ-A	8		15	<sup>0</sup> / <sub>-0.011</sub>	17	11.5	1.1	1	14.3	170	220	4	11	
LM8 AJ	LM8 AJ-A	8		15		24	17.5	1.1	1	14.3	260	400	4	16	
LM10 AJ	LM10 AJ-A	10	<sup>0</sup> / <sub>-0.009</sub>	19		29	22.0	1.3	1	18	370	540	4	30	
LM12 AJ	LM12 AJ-A	12		21	<sup>0</sup> / <sub>-0.013</sub>	30	23.0	1.3	1.5	20	410	590	4	31.5	
LM13 AJ	LM13 AJ-A	13		23	<sup>0</sup> / <sub>-0.013</sub>	32	23.0	1.3	1.5	22	500	770	4	43	
LM16 AJ	LM16 AJ-A	16		28		37	26.5	1.6	1.5	27	770	1170	5	69	
LM20 AJ	LM20 AJ-A	20		32		42	30.5	1.6	1.5	30.5	860	1370	5	87	
LM25 AJ	LM25 AJ-A	25	<sup>0</sup> / <sub>-0.010</sub>	40	<sup>0</sup> / <sub>-0.016</sub>	59	41.0	1.85	2	38	980	1560	6	220	
LM30 AJ	LM30 AJ-A	30		45		64	44.5	1.85	2.5	43	1560	2740	6	250	
LM35 AJ	LM35 AJ-A	35		52		70	49.5	2.1	2.5	49	1660	3130	6	390	
LM40 AJ	LM40 AJ-A	40	<sup>0</sup> / <sub>-0.012</sub>	60	<sup>0</sup> / <sub>-0.019</sub>	80	60.5	2.1	3	57	2150	4010	6	585	
LM50 AJ	LM50 AJ-A	50		80		100	74.0	2.6	3	76.5	3820	7930	6	1580	
LM60 AJ	LM60 AJ-A	60	<sup>0</sup> / <sub>-0.015</sub>	90	<sup>0</sup> / <sub>-0.022</sub>	110	85.0	3.15	3	86.5	4700	9990	6	2000	

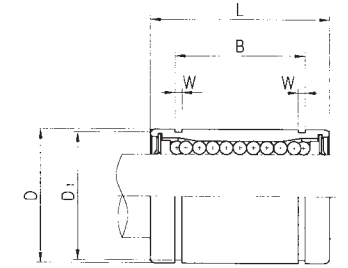
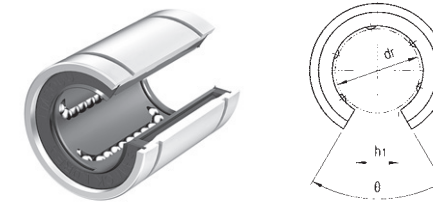
Note 1) Dynamic load rating is based on the nominal life of 50km.  
In case of 100km, C on the table need to be divided by 1.26  
Ex) LM12's 50km basis dynamic load rating C = 410N  
LM12's 100km basis dynamic load rating C<sub>100</sub> = 410 / 1.26 = 325.40N

Note 2) Based on the weight of resin retainer

Note 3) Dimension : mm

Note 4) Outer diameter is the obtained value before the slotting process.

**LM\_OP** OPEN LINEAR BEARING



Samick Linear Bearing LM 20 UU OP - A N S												
<b>Nominal Shaft Diameter</b>												
<b>Seal</b> Blank : No Seal U : One Side Seal UU : Both Side Seal												
<b>Linear Bearing Open type</b>												
<b>Retainer</b> Blank : Resin retainer(Standard) A : Steel retainer(High temperature)												
<b>Outer-sleeves (by corrosion resistance type)</b> Blank : No-plating(Standard) N : Electroless nickel plating R : Raydent treatment												
<b>Ball type (by corrosion resistance)</b> Blank : High carbon bearing steel ball (standard) S : Stainless steel ball												

PART NUMBER		DIAMETER		D		L	B	W	h <sub>1</sub>	θ	BASIC LOAD RATING(N)		NO. OF	WEIGHT	
Resin	Steel	dr.	TOLERANCE	D	TOLERANCE						DYNAMIC(C)	STATIC(C <sub>0</sub> )	BALL	ORBIT	(g)
LM12 OP		12		21	<sup>0</sup> / <sub>-0.013</sub>	30	23.0	1.3	8	80	410	590	3	31.5	
LM13 OP		13	<sup>0</sup> / <sub>-0.009</sub>	23	<sup>0</sup> / <sub>-0.013</sub>	32	23.0	1.3	9	80	500	770	3	43	
LM16 OP		16		28		37	26.5	1.6	11	80	770	1170	4	69	
LM20 OP		20		32		42	30.5	1.6	11	60	860	1370	4	87	
LM25 OP		25	<sup>0</sup> / <sub>-0.010</sub>	40	<sup>0</sup> / <sub>-0.016</sub>	59	41.0	1.85	12	50	980	1560	5	220	
LM30 OP		30		45		64	44.5	1.85	15	50	1560	2740	5	250	
LM35 OP		35		52		70	49.5	2.1	17	50	1660	3130	5	390	
LM40 OP		40	<sup>0</sup> / <sub>-0.012</sub>	60	<sup>0</sup> / <sub>-0.019</sub>	80	60.5	2.1	20	50	2150	4010	5	585	
LM50 OP		50		80		100	74.0	2.6	25	50	3820	7930	5	1580	
LM60 OP		60	<sup>0</sup> / <sub>-0.015</sub>	90	<sup>0</sup> / <sub>-0.022</sub>	110	85.0	3.15	30	50	4700	9990	5	2000	

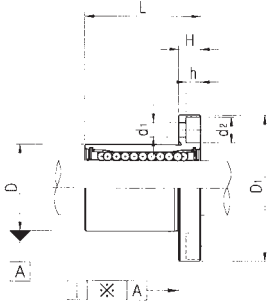
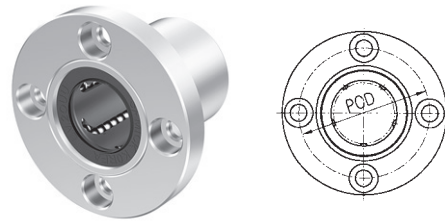
Note 1) Dynamic load rating is based on the nominal life of 50km.  
In case of 100km, C on the table need to be divided by 1.26  
Ex) LM12's 50km basis dynamic load rating C = 410N  
LM12's 100km basis dynamic load rating C<sub>100</sub> = 410 / 1.26 = 325.40N

Note 2) Based on the weight of resin retainer

Note 3) Dimension : mm

Note 4) Outer diameter is the obtained value before the slotting process.

LMF FLANGED LINEAR BEARING



Samick Circular Flanged Linear Bearing	LMF	20	UU	-	A	N	S
<b>Nominal Shaft Diameter</b>							
<b>Seal</b>							
Blank : No Seal U : One Side Seal UU : Both Side Seal							
<b>Retainer</b>							
Blank : Resin retainer(Standard) A : Steel retainer(High temperature)							
<b>Outer-sleeves (by corrosion resistance type)</b>							
Blank : No-plating(Standard) N : Electroless nickel plating R : Raydent treatment							
<b>Ball type (by corrosion resistance)</b>							
Blank : High carbon bearing steel ball (standard) S : Stainless steel ball							

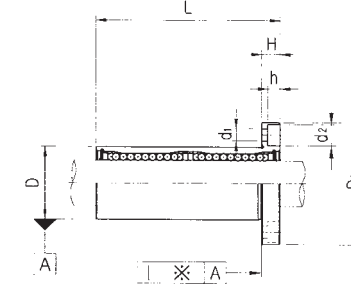
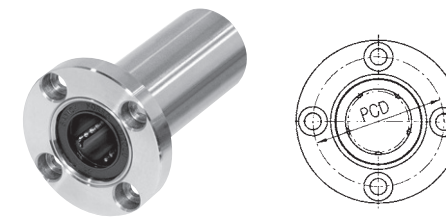
PART NUMBER	Resin	Steel	DIAMETER		L	D <sub>1</sub>	H	PCD	d <sub>1</sub>	d <sub>2</sub>	h	SQUARENESS *(μm)	BASIC LOAD RATING(N)		NO. OF BALLS	WEIGHT (g)
			dr.	TOLERANCE									D TOLERANCE	DYNAMIC(C)		
LMF 6		LMF6-A	6		19	28	5	20	3.4	6.5	3.3	12	200	260	4	26.5
LMF 8S		LMF8S-A	8		17	32	5	24	3.4	6.5	3.3	12	170	220	4	34
LMF 8		LMF8-A	8		24	32	5	24	3.4	6.5	3.3	12	260	400	4	40
LMF 10		LMF10-A	10	<sup>0</sup> / <sub>-0.009</sub>	29	40	6	29	4.5	8.0	4.4	12	370	540	4	78
LMF 12		LMF12-A	12		30	42	6	32	4.5	8.0	4.4	12	410	590	4	76
LMF 13		LMF13-A	13		32	43	6	33	4.5	8.0	4.4	12	500	770	4	94
LMF 16		LMF16-A	16		37	48	6	38	4.5	8.0	4.4	12	770	1170	5	134
LMF 20		LMF20-A	20		42	54	8	43	5.5	9.5	5.4	15	860	1370	5	180
LMF 25		LMF25-A	25	<sup>0</sup> / <sub>-0.010</sub>	59	62	8	51	5.5	9.5	5.4	15	980	1560	6	340
LMF 30			30		64	74	10	60	6.6	11.0	6.5	15	1560	2740	6	460
LMF 35			35		70	82	10	67	6.6	11.0	6.5	20	1660	3130	6	795
LMF 40			40	<sup>0</sup> / <sub>-0.012</sub>	80	96	13	78	9.0	14.0	8.6	20	2150	4010	6	1054
LMF 50			50		100	116	13	98	9.0	14.0	8.6	20	3820	7930	6	2200
LMF 60			60	<sup>0</sup> / <sub>-0.015</sub>	110	134	18	112	11.0	17.5	10.8	25	4700	9990	6	2960

Note 1) Dynamic load rating is based on the nominal life of 50km.  
In case of 100km, C on the table need to be divided by 1.26  
Ex) LM12's 50km basis dynamic load rating C = 410N  
LM12's 100km basis dynamic load rating C<sub>100</sub> = 410 / 1.26 = 325.40N

Note 2) Based on the weight of resin retainer

Note 3) Dimension : mm

LMF\_L FLANGED LINEAR BEARING LONG



Samick Circular Flanged Linear Bearing	LMF	20	L	UU	-	A	N	S
<b>Nominal Shaft Diameter</b>								
<b>Linear Bearing Long type (for high load)</b>								
<b>Seal</b>								
Blank : No Seal U : One Side Seal UU : Both Side Seal								
<b>Retainer</b>								
Blank : Resin retainer(Standard) A : Steel retainer(High temperature)								
<b>Outer-sleeves (by corrosion resistance type)</b>								
Blank : No-plating(Standard) N : Electroless nickel plating R : Raydent treatment								
<b>Ball type (by corrosion resistance)</b>								
Blank : High carbon bearing steel ball (standard) S : Stainless steel ball								

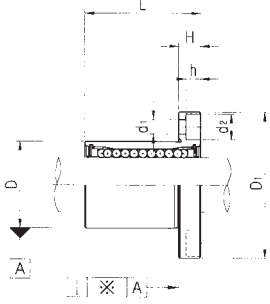
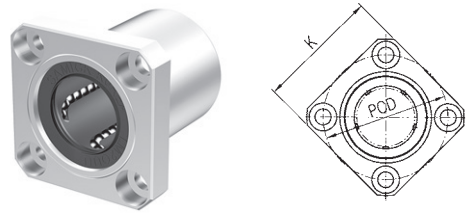
PART NUMBER	Resin	Steel	DIAMETER D		L	D <sub>1</sub>	H	PCD	d <sub>1</sub>	d <sub>2</sub>	h	SQUARENESS *(μm)	BASIC LOAD RATING(N)		NO. OF BALLS	WEIGHT (g)
			dr.	TOLERANCE									D TOLERANCE	DYNAMIC(C)		
LMF6 L		LMF6L-A	6		35	28	5	20	3.4	6.5	3.3	15	320	520	4	31
LMF8 L		LMF8L-A	8		45	32	5	24	3.4	6.5	3.3	15	430	780	4	53
LMF10 L		LMF10L-A	10		55	40	6	29	4.5	8.0	4.4	15	580	1100	4	105
LMF12 L		LMF12L-A	12	<sup>0</sup> / <sub>-0.010</sub>	57	42	6	32	4.5	8.0	4.4	15	650	1200	4	100
LMF13 L		LMF13L-A	13		61	43	6	33	4.5	8.0	4.4	15	810	1570	4	130
LMF16 L		LMF16L-A	16		70	48	6	38	4.5	8.0	4.4	15	1230	2350	5	187
LMF20 L		LMF20L-A	20		80	54	8	43	5.5	9.5	5.4	20	1400	2750	5	260
LMF25 L		LMF25L-A	25	<sup>0</sup> / <sub>-0.012</sub>	112	62	8	51	5.5	9.5	5.4	20	1560	3140	6	515
LMF30 L			30		123	74	10	60	6.6	11.0	6.5	20	2490	5490	6	655
LMF35 L			35		135	82	10	67	6.6	11.0	6.5	25	2650	6470	6	970
LMF40 L			40	<sup>0</sup> / <sub>-0.015</sub>	154	96	13	78	9.0	14.0	8.6	25	3430	8040	6	1560
LMF50 L			50		192	116	13	98	9.0	14.0	8.6	25	6080	15900	6	3500
LMF60 L			60	<sup>0</sup> / <sub>-0.020</sub>	211	134	18	112	11.0	17.5	10.8	25	7650	20000	6	4500

Note 1) Dynamic load rating is based on the nominal life of 50km.  
In case of 100km, C on the table need to be divided by 1.26  
Ex) LM12's 50km basis dynamic load rating C = 410N  
LM12's 100km basis dynamic load rating C<sub>100</sub> = 410 / 1.26 = 325.40N

Note 2) Based on the weight of resin retainer

Note 3) Dimension : mm

LMK FLANGED LINEAR BEARING



Samick Square Flanged Linear Bearing	LMK	20	UU	-	A	N	S
<b>Nominal Shaft Diameter</b>							
<b>Seal</b>							
Blank : No Seal U : One Side Seal UU : Both Side Seal							
<b>Retainer</b>							
Blank : Resin retainer(Standard) A : Steel retainer(High temperature)							
<b>Outer-sleeves (by corrosion resistance type)</b>							
Blank : No-plating(Standard) N : Electroless nickel plating R : Raydent treatment							
<b>Ball type (by corrosion resistance)</b>							
Blank : High carbon bearing steel ball (standard) S : Stainless steel ball							

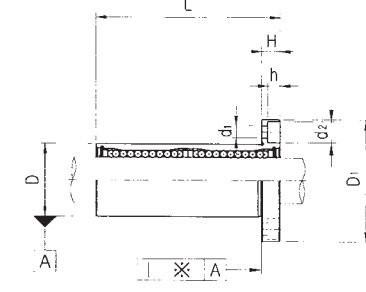
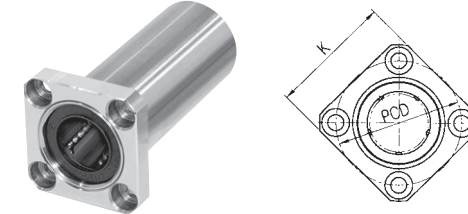
PART NUMBER	Resin	Steel	DIAMETER		L	D <sub>1</sub>	H	PCD	K	d <sub>1</sub>	d <sub>2</sub>	h	SQUARENESS ※(μm)	BASIC LOAD RATING(N)		NO. OF BALL	WEIGHT (g)
			dr.	TOLERANCE										TOLERANCE	DYNAMIC(C)		
LMK6	LMK6-A	6	12		19	28	5	20	22	3.4	6.5	3.3	12	200	260	4	26.5
LMK8S	LMK8S-A	8	15	<sup>0</sup> / <sub>-0.011</sub>	17	32	5	24	25	3.4	6.5	3.3	12	170	220	4	34
LMK8	LMK8-A	8	15		24	32	5	24	25	3.4	6.5	3.3	12	260	400	4	40
LMK10	LMK10-A	10	19	<sup>0</sup> / <sub>-0.009</sub>	29	40	6	29	30	4.5	8.0	4.4	12	370	540	4	78
LMK12	LMK12-A	12	21	<sup>0</sup> / <sub>-0.013</sub>	30	42	6	32	32	4.5	8.0	4.4	12	410	590	4	76
LMK13	LMK13-A	13	23	<sup>0</sup> / <sub>-0.013</sub>	32	43	6	33	34	4.5	8.0	4.4	12	500	770	4	94
LMK16	LMK16-A	16	28		37	48	6	38	37	4.5	8.0	4.4	12	770	1170	5	134
LMK20	LMK20-A	20	32		42	54	8	43	42	5.5	9.5	5.4	15	860	1370	5	180
LMK25	LMK25-A	25	40	<sup>0</sup> / <sub>-0.010</sub>	59	62	8	51	50	5.5	9.5	5.4	15	980	1560	6	340
LMK30		30	45	<sup>0</sup> / <sub>-0.016</sub>	64	74	10	60	58	6.6	11.0	6.5	15	1560	2740	6	460
LMK35		35	52	<sup>0</sup> / <sub>-0.019</sub>	70	82	10	67	64	6.6	11.0	6.5	20	1660	3130	6	795
LMK40		40	60	<sup>0</sup> / <sub>-0.012</sub>	80	96	13	78	75	9.0	14.0	8.6	20	2150	4010	6	1054
LMK50		50	80	<sup>0</sup> / <sub>-0.015</sub>	100	116	13	98	92	9.0	14.0	8.6	20	3320	7930	6	2200
LMK60		60	90	<sup>0</sup> / <sub>-0.015</sub>	110	134	18	112	106	11.0	17.5	10.8	25	4700	9990	6	2960

Note 1) Dynamic load rating is based on the nominal life of 50km.  
In case of 100km, C on the table need to be divided by 1.26  
Ex) LM12's 50km basis dynamic load rating C = 410N  
LM12's 100km basis dynamic load rating C<sub>100</sub> = 410 / 1.26 = 325.40N

Note 2) Based on the weight of resin retainer

Note 3) Dimension : mm

LMK\_L FLANGED LINEAR BEARING LONG



Samick Square Flanged Linear Bearing	LMK	20	L	UU	-	A	N	S
<b>Nominal Shaft Diameter</b>								
<b>Linear Bearing Long type (for high load)</b>								
<b>Seal</b>								
Blank : No Seal U : One Side Seal UU : Both Side Seal								
<b>Retainer</b>								
Blank : Resin retainer(Standard) A : Steel retainer(High temperature)								
<b>Outer-sleeves (by corrosion resistance type)</b>								
Blank : No-plating(Standard) N : Electroless nickel plating R : Raydent treatment								
<b>Ball type (by corrosion resistance)</b>								
Blank : High carbon bearing steel ball (standard) S : Stainless steel ball								

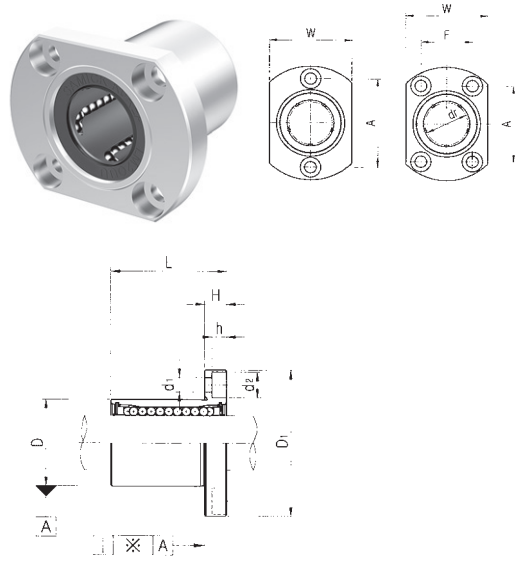
PART NUMBER	Resin	Steel	DIAMETER		L	D <sub>1</sub>	H	PCD	K	d <sub>1</sub>	d <sub>2</sub>	h	SQUARENESS ※(μm)	BASIC LOAD RATING(N)		NO. OF BALL	WEIGHT (g)
			dr.	TOLERANCE										TOLERANCE	DYNAMIC(C)		
LMK6 L	LMK6L-A	6	12	<sup>0</sup> / <sub>-0.013</sub>	35	28	5	20	22	3.4	6.5	3.3	15	320	520	4	31
LMK8 L	LMK8L-A	8	15	<sup>0</sup> / <sub>-0.010</sub>	45	32	5	24	25	3.4	6.5	3.3	15	430	780	4	53
LMK10 L	LMK10L-A	10	19	<sup>0</sup> / <sub>-0.010</sub>	55	40	6	29	30	4.5	8.0	4.4	15	580	1100	4	105
LMK12 L	LMK12L-A	12	21	<sup>0</sup> / <sub>-0.016</sub>	57	42	6	32	32	4.5	8.0	4.4	15	650	1200	4	100
LMK13 L	LMK13L-A	13	23	<sup>0</sup> / <sub>-0.016</sub>	61	43	6	33	34	4.5	8.0	4.4	15	810	1570	4	130
LMK16 L	LMK16L-A	16	28		70	48	6	38	37	4.5	8.0	4.4	15	1230	2350	5	187
LMK20 L	LMK20L-A	20	32	<sup>0</sup> / <sub>-0.012</sub>	80	54	8	43	42	5.5	9.5	5.4	20	1400	2750	5	260
LMK25 L	LMK25L-A	25	40	<sup>0</sup> / <sub>-0.012</sub>	112	62	8	51	50	5.5	9.5	5.4	20	1560	3140	6	515
LMK30 L		30	45	<sup>0</sup> / <sub>-0.019</sub>	123	74	10	60	58	6.6	11.0	6.5	20	2490	5490	6	655
LMK35 L		35	52	<sup>0</sup> / <sub>-0.022</sub>	135	82	10	67	64	6.6	11.0	6.5	25	2650	6470	6	970
LMK40 L		40	60	<sup>0</sup> / <sub>-0.015</sub>	154	96	13	78	75	9.0	14.0	8.6	25	3430	8040	6	1560
LMK50 L		50	80	<sup>0</sup> / <sub>-0.020</sub>	192	116	13	98	92	9.0	14.0	8.6	25	6080	15900	6	3500
LMK60 L		60	90	<sup>0</sup> / <sub>-0.020</sub>	211	134	18	112	106	11.0	17.5	10.8	25	7650	20000	6	4500

Note 1) Dynamic load rating is based on the nominal life of 50km.  
In case of 100km, C on the table need to be divided by 1.26  
Ex) LM12 s 50km basis dynamic load rating C = 410N  
LM12 s 100km basis dynamic load rating C<sub>100</sub> = 410 / 1.26 = 325.40N

Note 2) Based on the weight of resin retainer

Note 3) Dimension : mm

LMH FLANGED LINEAR BEARING

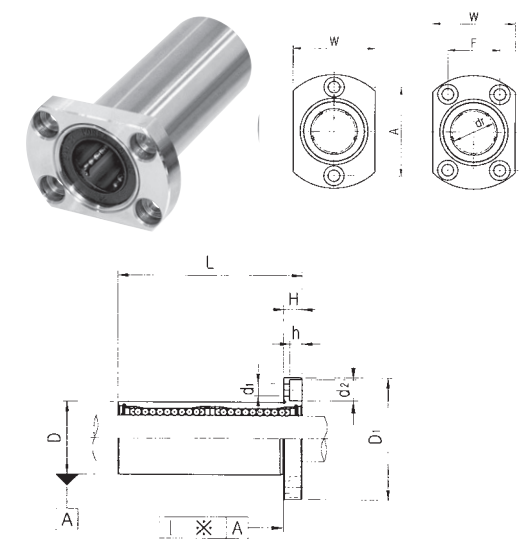


Samick Oval Flanged Linear Bearing		LMH	20	UU	-	A	N	S
<b>Nominal Shaft Diameter</b>								
<b>Seal</b>		Blank : No Seal U : One Side Seal UU : Both Side Seal						
<b>Retainer</b>		Blank : Resin retainer(Standard) A : Steel retainer(High temperature)						
<b>Outer-sleeves (by corrosion resistance type)</b>		Blank : No-plating(Standard) N : Electroless nickel plating R : Raydent treatment						
<b>Ball type (by corrosion resistance)</b>		Blank : High carbon bearing steel ball (standard) S : Stainless steel ball						

PART NUMBER		DIAMETER dr.	D TOLERANCE	L	D <sub>1</sub>	H	W	A	F	d <sub>1</sub>	d <sub>2</sub>	h	SQUARENESS μm	BASIC LOAD RATING(N)		NO. OF BALL	WEIGHT (g)
Resin	Steel													DYNAMIC(C)	STATIC(C <sub>0</sub> )		
LMH6	LMH6-A	6	12	19	28	5	18	20	-	3.4	6.5	3.3	12	200	260	4	26.5
LMH8	LMH8-A	8	15 <sup>-0.011</sup>	24	32	5	21	24	-	3.4	6.5	3.3	12	260	400	4	40
LMH10	LMH10-A	10	19 <sup>-0.009</sup>	29	40	6	25	29	-	4.5	8.0	4.4	12	370	540	4	78
LMH12	LMH12-A	12	21 <sup>-0.010</sup>	30	42	6	27	32	-	4.5	8.0	4.4	12	410	590	4	76
LMH13	LMH13-A	13	23 <sup>-0.013</sup>	32	43	6	29	33	-	4.5	8.0	4.4	12	500	770	4	94
LMH16	LMH16-A	16	28	37	48	6	34	31	22	4.5	8.0	4.4	12	770	1170	5	134
LMH20	LMH20-A	20	32	42	54	8	38	36	24	5.5	9.5	5.4	15	860	1370	5	180
LMH25	LMH25-A	25	40 <sup>-0.010</sup>	59 <sup>-0.016</sup>	62	8	46	40	32	5.5	9.5	5.4	15	980	1560	6	340
LMH30		30	45	64	74	10	51	49	35	6.6	11.0	6.5	15	1560	2740	6	460

Note 1) Dynamic load rating is based on the nominal life of 50km.  
In case of 100km, C on the table need to be divided by 1.26  
Ex) LM12's 50km basis dynamic load rating C = 410N  
LM12's 100km basis dynamic load rating C<sub>100</sub> = 410 / 1.26 = 325.40N  
Note 2) Based on the weight of resin retainer  
Note 3) Dimension : mm

LMH\_L FLANGED LINEAR BEARING LONG

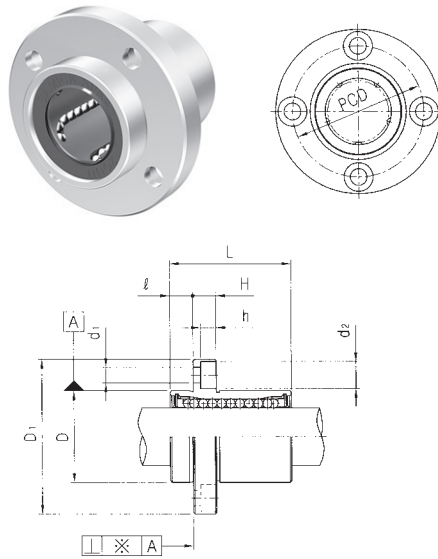


Samick Oval Flanged Linear Bearing		LMH	20	L	UU	-	A	N	S
<b>Nominal Shaft Diameter</b>									
<b>Linear Bearing Long type (for high load)</b>									
<b>Seal</b>		Blank : No Seal U : One Side Seal UU : Both Side Seal							
<b>Retainer</b>		Blank : Resin retainer(Standard) A : Steel retainer(High temperature)							
<b>Outer-sleeves (by corrosion resistance type)</b>		Blank : No-plating(Standard) N : Electroless nickel plating R : Raydent treatment							
<b>Ball type (by corrosion resistance)</b>		Blank : High carbon bearing steel ball (standard) S : Stainless steel ball							

PART NUMBER		DIAMETER dr.	D TOLERANCE	L	D <sub>1</sub>	H	W	A	F	d <sub>1</sub>	d <sub>2</sub>	h	SQUARENESS μm	BASIC LOAD RATING(N)		NO. OF BALL	WEIGHT (g)
Resin	Steel													DYNAMIC(C)	STATIC(C <sub>0</sub> )		
LMH6 L	LMH6L-A	6	12	35	28	5	18	20	-	3.4	6.5	3.3	15	320	520	4	31
LMH8 L	LMH8L-A	8	15 <sup>-0.013</sup>	45	32	5	21	24	-	3.4	6.5	3.3	15	430	780	4	53
LMH10 L	LMH10L-A	10	19	55	40	6	25	29	-	4.5	8.0	4.4	15	580	1100	4	105
LMH12 L	LMH12L-A	12	21 <sup>-0.010</sup>	57	42	6	27	32	-	4.5	8.0	4.4	15	650	1200	4	100
LMH13 L	LMH13L-A	13	23 <sup>-0.016</sup>	61	43	6	29	33	-	4.5	8.0	4.4	15	810	1570	4	130
LMH16 L	LMH16L-A	16	28	70	48	6	34	31	22	4.5	8.0	4.4	15	1230	2350	5	187
LMH20 L	LMH20L-A	20	32	80	54	8	38	36	24	5.5	9.5	5.4	20	1400	2750	5	260
LMH25 L	LMH25L-A	25	40 <sup>-0.012</sup>	112 <sup>-0.019</sup>	62	8	46	40	32	5.5	9.5	5.4	20	1560	3140	6	515
LMH30 L		30	45	123	74	10	51	49	35	6.6	11.0	6.5	20	2490	5490	6	655

Note 1) Dynamic load rating is based on the nominal life of 50km.  
In case of 100km, C on the table need to be divided by 1.26  
Ex) LM12's 50km basis dynamic load rating C = 410N  
LM12's 100km basis dynamic load rating C<sub>100</sub> = 410 / 1.26 = 325.40N  
Note 2) Based on the weight of resin retainer  
Note 3) Dimension : mm

LMFP FLANGED LINEAR BEARING

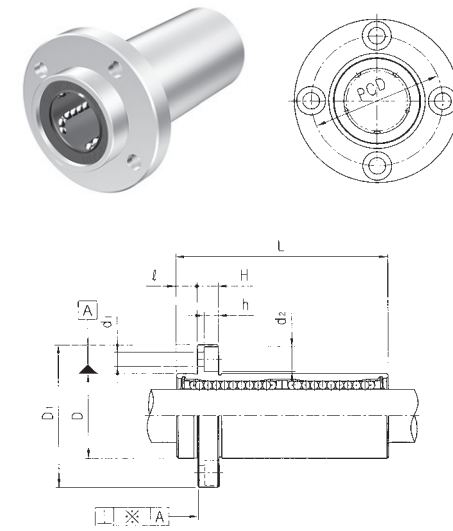


Samick Circular Flange Linear Bearing LMFP 20 UU - A N S	
<b>Nominal Shaft Diameter</b>	
<b>Seal</b>	Blank : No Seal U : One Side Seal UU : Both Side Seal
<b>Retainer</b>	Blank : Resin retainer(Standard) A : Steel retainer(High temperature)
<b>Outer-sleeves (by corrosion resistance type)</b>	Blank : No-plating(Standard) N : Electroless nickel plating R : Raydent treatment
<b>Ball type (by corrosion resistance)</b>	Blank : High carbon bearing steel ball (standard) S : Stainless steel ball

PART NUMBER	Resin Steel	DIAMETER dr. TOLERANCE	D mm TOLERANCE	L	D <sub>1</sub>	ℓ	H	PCD	d <sub>1</sub>	d <sub>2</sub>	h	SQUARENESS ※(μm)	BASIC LOAD RATING(N)		NO. OF BALL ORBIT	WEIGHT (g)
													DYNAMIC(C)	STATIC(C <sub>0</sub> )		
LMFP6	LMFP6-A	6	12	19	28	5	5	20	3.4	6.5	3.3	12	200	260	4	26.5
LMFP8	LMFP8-A	8	15 <sup>-0.011</sup>	24	32	5	5	24	3.4	6.5	3.3	12	260	400	4	40
LMFP10	LMFP10-A	10	19	29	40	6	6	29	4.5	8	4.4	12	370	540	4	76
LMFP12	LMFP12-A	12	21 <sup>-0.009</sup>	30	42	6	6	32	4.5	8	4.4	12	410	590	4	78
LMFP13	LMFP13-A	13	23 <sup>-0.003</sup>	32	43	6	6	33	4.5	8	4.4	12	500	770	4	94
LMFP16	LMFP16-A	16	28	37	48	6	6	38	4.5	8	4.4	12	770	1170	5	134
LMFP20	LMFP20-A	20	32	42	54	8	8	43	5.5	9.5	5.4	15	860	1370	5	180
LMFP25	LMFP25-A	25	40 <sup>-0.010</sup>	59	62	8	8	51	5.5	9.5	5.4	15	980	1560	6	340
LMFP30		30	45	64	74	10	10	60	6.6	11	6.5	15	1560	2740	6	460
LMFP35		35	52	70	82	10	10	67	6.6	11	6.5	20	1660	3130	6	795
LMFP40		40	60 <sup>-0.012</sup>	80	96	13	13	78	9	14	8.6	20	2150	4010	6	1054
LMFP50		50	80	100	116	13	13	98	9	14	8.6	20	3820	7930	6	2200
LMFP60		60	90 <sup>-0.015</sup>	110	134	18	18	112	11	17.5	10.8	25	4700	9990	6	2960

Note 1) Dynamic load rating is based on the nominal life of 50km.  
In case of 100km, C on the table need to be divided by 1.26  
Ex) LM12's 50km basis dynamic load rating C = 410N  
LM12's 100km basis dynamic load rating C<sub>100</sub> = 410 / 1.26 = 325.40N  
Note 2) Based on the weight of resin retainer  
Note 3) Dimension : mm

LMFP\_L FLANGED LINEAR BEARING LONG

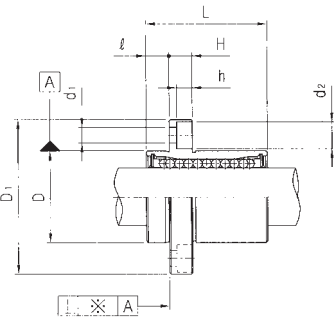
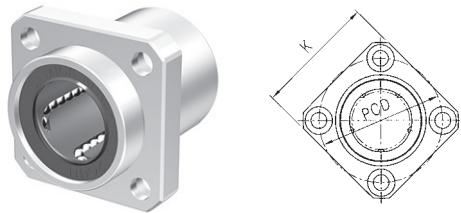


Samick Circular Flange Linear Bearing LMFP 20 L UU - A N S	
<b>Nominal Shaft Diameter</b>	
<b>Linear Bearing Long type (for high load)</b>	
<b>Seal</b>	Blank : No Seal U : One Side Seal UU : Both Side Seal
<b>Retainer</b>	Blank : Resin retainer(Standard) A : Steel retainer(High temperature)
<b>Outer-sleeves (by corrosion resistance type)</b>	Blank : No-plating(Standard) N : Electroless nickel plating R : Raydent treatment
<b>Ball type (by corrosion resistance)</b>	Blank : High carbon bearing steel ball (standard) S : Stainless steel ball

PART NUMBER	Resin Steel	DIAMETER dr. TOLERANCE	D mm TOLERANCE	L	D <sub>1</sub>	ℓ	H	PCD	d <sub>1</sub>	d <sub>2</sub>	h	SQUARENESS ※(μm)	BASIC LOAD RATING(N)		NO. OF BALL ORBIT	WEIGHT (g)
													DYNAMIC(C)	STATIC(C <sub>0</sub> )		
LMFP6L	LMFP6L-A	6	12	35	28	5	5	20	3.4	6.5	3.3	15	320	520	4	31
LMFP8L	LMFP8L-A	8	15 <sup>-0.013</sup>	45	32	5	5	24	3.4	6.5	3.3	15	430	780	4	53
LMFP10L	LMFP10L-A	10	19	55	40	6	6	29	4.5	8	4.4	15	580	1100	4	105
LMFP12L	LMFP12L-A	12	21 <sup>-0.010</sup>	57	42	6	6	32	4.5	8	4.4	15	650	1200	4	100
LMFP13L	LMFP13L-A	13	23 <sup>-0.016</sup>	61	43	6	6	33	4.5	8	4.4	15	810	1570	4	130
LMFP16L	LMFP16L-A	16	28	70	48	6	6	38	4.5	8	4.4	15	1230	2350	5	187
LMFP20L	LMFP20L-A	20	32	80	54	8	8	43	5.5	9.5	5.4	20	1400	2750	5	260
LMFP25L	LMFP25L-A	25	40 <sup>-0.012</sup>	112	62	8	8	51	5.5	9.5	5.4	20	1560	3140	6	515
LMFP30L		30	45	123	74	10	10	60	6.6	11	6.5	20	2490	5490	6	655
LMFP35L		35	52	135	82	10	10	67	6.6	11	6.5	25	2650	6470	6	970
LMFP40L		40	60 <sup>-0.015</sup>	154	96	13	13	78	9	14	8.6	25	3430	8040	6	1560
LMFP50L		50	80	192	116	13	13	98	9	14	8.6	25	6080	15900	6	3500
LMFP60L		60	90 <sup>-0.020</sup>	211	134	18	18	112	11	17.5	10.8	25	7650	20000	6	4500

Note 1) Dynamic load rating is based on the nominal life of 50km.  
In case of 100km, C on the table need to be divided by 1.26  
Ex) LM12's 50km basis dynamic load rating C = 410N  
LM12's 100km basis dynamic load rating C<sub>100</sub> = 410 / 1.26 = 325.40N  
Note 2) Based on the weight of resin retainer  
Note 3) Dimension : mm

LMKP FLANGED LINEAR BEARING



Samick Square Pilot Flanged Linear Bearing		LMKP	20	UU	-	A	N	S
<b>Nominal Shaft Diameter</b>								
<b>Seal</b>		Blank : No Seal U : One Side Seal UU : Both Side Seal						
<b>Retainer</b>		Blank : Resin retainer(Standard) A : Steel retainer(High temperature)						
<b>Outer-sleeves (by corrosion resistance type)</b>		Blank : No-plating(Standard) N : Electroless nickel plating R : Raydent treatment						
<b>Ball type (by corrosion resistance)</b>		Blank : High carbon bearing steel ball (standard) S : Stainless steel ball						

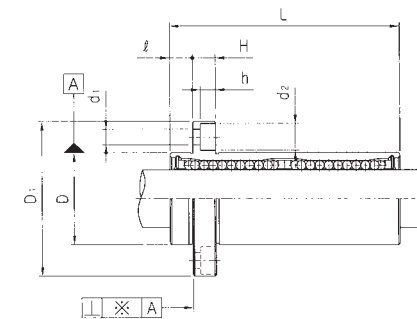
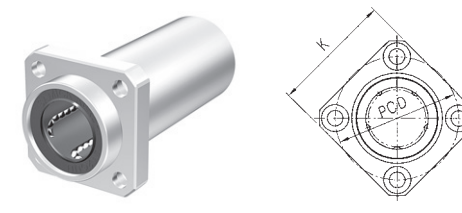
PART NUMBER		DIAMETER		L	D <sub>1</sub>	ℓ	H	PCD	K	d <sub>1</sub>	d <sub>2</sub>	h	SQUARENESS % (μm)	BASIC LOAD RATING(N) DYNAMIC(C) STATIC(C <sub>0</sub> )	NO. OF BALL	WEIGHT ORBIT (g)	
Resin	Steel	dr. TOLERANCE	mm TOLERANCE														
LMKP6	LMKP6-A	6	12	19	28	5	5	20	22	3.4	6.5	3.3	12	200	260	4	26.5
LMKP8	LMKP8-A	8	15 <sup>-0.011</sup>	24	32	5	5	24	25	3.4	6.5	3.3	12	260	400	4	40
LMKP10	LMKP10-A	10	19	29	40	6	6	29	30	4.5	8	4.4	12	370	540	4	76
LMKP12	LMKP12-A	12	21 <sup>-0.009</sup>	30	42	6	6	32	32	4.5	8	4.4	12	410	590	4	78
LMKP13	LMKP13-A	13	23 <sup>-0.013</sup>	32	43	6	6	33	34	4.5	8	4.4	12	500	770	4	94
LMKP16	LMKP16-A	16	28	37	48	6	6	38	37	4.5	8	4.4	12	770	1170	5	134
LMKP20	LMKP20-A	20	32	42	54	8	8	43	42	5.5	9.5	5.4	15	860	1370	5	180
LMKP25	LMKP25-A	25	40 <sup>-0.010</sup>	59	62	8	8	51	50	5.5	9.5	5.4	15	980	1560	6	340
LMKP30		30	45	64	74	10	10	60	58	6.6	11	6.5	15	1560	2740	6	460
LMKP35		35	52	70	82	10	10	67	64	6.6	11	6.5	20	1660	3130	6	795
LMKP40		40	60 <sup>-0.012</sup>	80	96	13	13	78	75	9	14	8.6	20	2150	4010	6	1054
LMKP50		50	80	100	116	13	13	98	92	9	14	8.6	20	3820	7930	6	2200
LMKP60		60	90 <sup>-0.015</sup>	110	134	18	18	112	106	11	17	10.8	25	4700	9990	6	2960

Note 1) Dynamic load rating is based on the nominal life of 50km.  
In case of 100km, C on the table need to be divided by 1.26  
Ex) LM12's 50km basis dynamic load rating C = 410N  
LM12's 100km basis dynamic load rating C<sub>100</sub> = 410 / 1.26 = 325.40N

Note 2) Based on the weight of resin retainer

Note 3) Dimension : mm

LMKP\_L FLANGED LINEAR BEARING LONG



Samick Square Pilot Flanged Linear Bearing		LMKP	20	L	UU	-	A	N	S
<b>Nominal Shaft Diameter</b>									
<b>Linear Bearing Long type (for high load)</b>									
<b>Seal</b>		Blank : No Seal U : One Side Seal UU : Both Side Seal							
<b>Retainer</b>		Blank : Resin retainer(Standard) A : Steel retainer(High temperature)							
<b>Outer-sleeves (by corrosion resistance type)</b>		Blank : No-plating(Standard) N : Electroless nickel plating R : Raydent treatment							
<b>Ball type (by corrosion resistance)</b>		Blank : High carbon bearing steel ball (standard) S : Stainless steel ball							

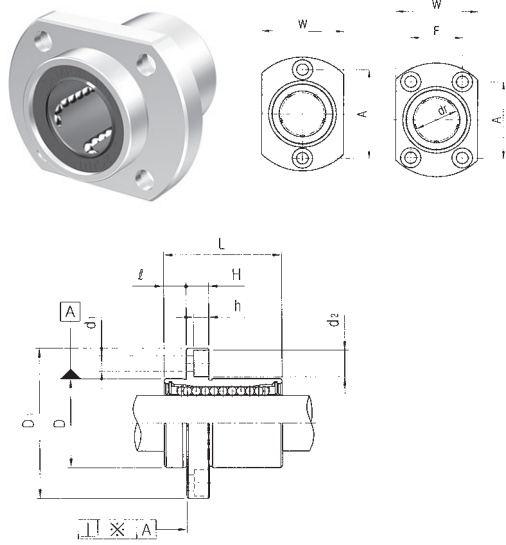
PART NUMBER		DIAMETER		L	D <sub>1</sub>	ℓ	H	PCD	K	d <sub>1</sub>	d <sub>2</sub>	h	SQUARENESS % (μm)	BASIC LOAD RATING(N) DYNAMIC(C) STATIC(C <sub>0</sub> )	NO. OF BALL	WEIGHT ORBIT (g)	
Resin	Steel	dr. TOLERANCE	mm TOLERANCE														
LMKP6L	LMKP6L-A	6	12	35	28	5	5	20	22	3.4	6.5	3.3	15	320	520	4	31
LMKP8L	LMKP8L-A	8	15 <sup>-0.013</sup>	45	32	5	5	24	25	3.4	6.5	3.3	15	430	780	4	53
LMKP10L	LMKP10L-A	10	19	55	40	6	6	29	30	4.5	8	4.4	15	580	1100	4	105
LMKP12L	LMKP12L-A	12	21 <sup>-0.010</sup>	57	42	6	6	32	32	4.5	8	4.4	15	650	1200	4	100
LMKP13L	LMKP13L-A	13	23 <sup>-0.016</sup>	61	43	6	6	33	34	4.5	8	4.4	15	810	1570	4	130
LMKP16L	LMKP16L-A	16	28	70	48	6	6	38	37	4.5	8	4.4	15	1230	2350	5	187
LMKP20L	LMKP20L-A	20	32	80	54	8	8	43	42	5.5	9.5	5.4	20	1400	2750	5	260
LMKP25L	LMKP25L-A	25	40 <sup>-0.012</sup>	112	62	8	8	51	50	5.5	9.5	5.4	20	1560	3140	6	515
LMKP30L		30	45	123	74	10	10	60	58	6.6	11	6.5	20	2490	5490	6	655
LMKP35L		35	52	135	82	10	10	67	64	6.6	11	6.5	25	2650	6470	6	970
LMKP40L		40	60 <sup>-0.015</sup>	154	96	13	13	78	75	9	14	8.6	25	3430	8040	6	1560
LMKP50L		50	80	192	116	13	13	98	92	9	14	8.6	25	6080	15900	6	3500
LMKP60L		60	90 <sup>-0.020</sup>	211	134	18	18	112	106	11	17	10.8	25	7650	20000	6	4500

Note 1) Dynamic load rating is based on the nominal life of 50km.  
In case of 100km, C on the table need to be divided by 1.26  
Ex) LM12's 50km basis dynamic load rating C = 410N  
LM12's 100km basis dynamic load rating C<sub>100</sub> = 410 / 1.26 = 325.40N

Note 2) Based on the weight of resin retainer

Note 3) Dimension : mm

LMHP FLANGED LINEAR BEARING



Samick Oval Pilot Flanged Linear Bearing	LMHP	20	UU	-	A	N	S
<b>Nominal Shaft Diameter</b>							
<b>Seal</b>							
Blank : No Seal U : One Side Seal UU : Both Side Seal							
<b>Retainer</b>							
Blank : Resin retainer(Standard) A : Steel retainer(High temperature)							
<b>Outer-sleeves (by corrosion resistance type)</b>							
Blank : No-plating(Standard) N : Electroless nickel plating R : Raydent treatment							
<b>Ball type (by corrosion resistance)</b>							
Blank : High carbon bearing steel ball (standard) S : Stainless steel ball							

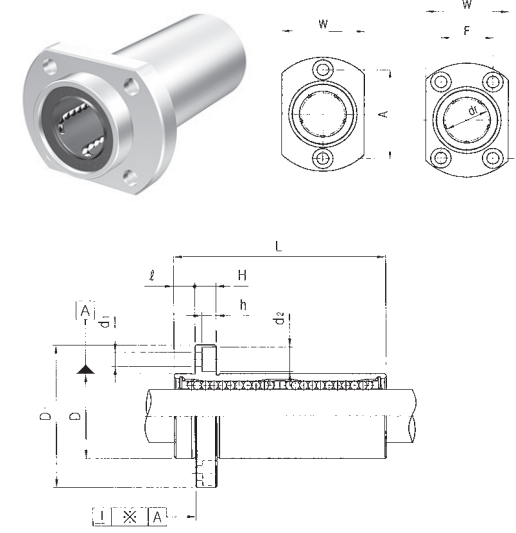
PART NUMBER		DIAMETER dr. TOLERANCE	D mm TOLERANCE	L	D1	ℓ	H	W	A	F	d1	d2	h	SQUARENESS ※(μm)	BASIC LOAD RATING(N)		NO. OF BALL	WEIGHT (g)
Resin	Steel														DYNAMIC(C)	STATIC(Cs)		
LMHP6	LMHP6-A	6	12	19	28	5	5	18	20		3.4	6.5	3.3	12	200	260	4	26.5
LMHP8	LMHP8-A	8	15 <sup>-0.011</sup>	24	32	5	5	21	24		3.4	6.5	3.3	12	260	400	4	40
LMHP10	LMHP10-A	10	19 <sup>-0.009</sup>	29	40	6	6	25	29		4.5	8	4.4	12	370	540	4	76
LMHP12	LMHP12-A	12	21 <sup>-0.010</sup>	30	42	6	6	27	32		4.5	8	4.4	12	410	590	4	78
LMHP13	LMHP13-A	13	23 <sup>-0.013</sup>	32	43	6	6	29	33		4.5	8	4.4	12	500	770	4	94
LMHP16	LMHP16-A	16	28	37	48	6	6	34	31	22	4.5	8	4.4	12	770	1170	5	134
LMHP20	LMHP20-A	20	32	42	54	8	8	38	36	24	5.5	9.5	5.4	15	860	1370	5	180
LMHP25	LMHP25-A	25 <sup>-0.010</sup>	40 <sup>-0.016</sup>	59	62	8	8	46	40	32	5.5	9.5	5.4	15	980	1560	6	340
LMHP30		30	45	64	74	10	10	51	49	35	6.6	11	6.5	15	1560	2740	6	460

Note 1) Dynamic load rating is based on the nominal life of 50km.  
In case of 100km, C on the table need to be divided by 1.26  
Ex) LM12's 50km basis dynamic load rating C = 410N  
LM12's 100km basis dynamic load rating C<sub>100</sub> = 410 / 1.26 = 325.40N

Note 2) Based on the weight of resin retainer

Note 3) Dimension : mm

LMHP\_L FLANGED LINEAR BEARING LONG



Samick Oval Pilot Flanged Linear Bearing	LMHP	20	L	UU	-	A	N	S
<b>Nominal Shaft Diameter</b>								
<b>Linear Bearing Long type(for high load)</b>								
<b>Seal</b>								
Blank : No Seal U : One Side Seal UU : Both Side Seal								
<b>Retainer</b>								
Blank : Resin retainer(Standard) A : Steel retainer(High temperature)								
<b>Outer-sleeves (by corrosion resistance type)</b>								
Blank : No-plating(Standard) N : Electroless nickel plating R : Raydent treatment								
<b>Ball type (by corrosion resistance)</b>								
Blank : High carbon bearing steel ball (standard) S : Stainless steel ball								

PART NUMBER		DIAMETER dr. TOLERANCE	D mm TOLERANCE	L	D1	ℓ	H	W	A	F	d1	d2	h	SQUARENESS ※(μm)	BASIC LOAD RATING(N)		NO. OF BALL	WEIGHT (g)
Resin	Steel														DYNAMIC(C)	STATIC(Cs)		
LMHP6L	LMHP6L-A	6	12	35	28	5	5	18	20		3.4	6.5	3.3	15	320	520	4	31
LMHP8L	LMHP8L-A	8	15 <sup>-0.013</sup>	45	32	5	5	21	24		3.4	6.5	3.3	15	430	780	4	53
LMHP10L	LMHP10L-A	10	19	55	40	6	6	25	29		4.5	8	4.4	15	580	1100	4	105
LMHP12L	LMHP12L-A	12	21 <sup>-0.010</sup>	57	42	6	6	27	32		4.5	8	4.4	15	650	1200	4	100
LMHP13L	LMHP13L-A	13	23 <sup>-0.016</sup>	61	43	6	6	29	33		4.5	8	4.4	15	810	1570	4	130
LMHP16L	LMHP16L-A	16	28	70	48	6	6	34	31	22	4.5	8	4.4	15	1230	2350	5	187
LMHP20L	LMHP20L-A	20	32	80	54	8	8	38	36	24	5.5	9.5	5.4	20	1400	2750	5	260
LMHP25L	LMHP25L-A	25 <sup>-0.012</sup>	40 <sup>-0.019</sup>	112	62	8	8	46	40	32	5.5	9.5	5.4	20	1560	3140	6	515
LMHP30L		30	45	123	74	10	10	51	49	35	6.6	11	6.5	20	2940	5490	6	655

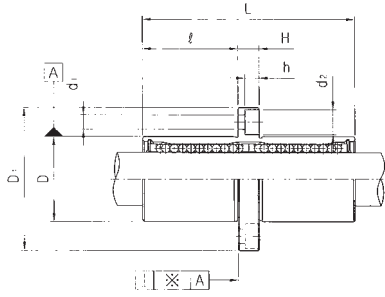
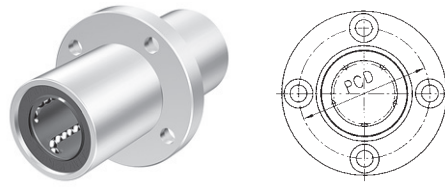
Note 1) Dynamic load rating is based on the nominal life of 50km.  
In case of 100km, C on the table need to be divided by 1.26  
Ex) LM12's 50km basis dynamic load rating C = 410N  
LM12's 100km basis dynamic load rating C<sub>100</sub> = 410 / 1.26 = 325.40N

Note 2) Based on the weight of resin retainer

Note 3) Dimension : mm



LMFM FLANGED LINEAR BEARING LONG

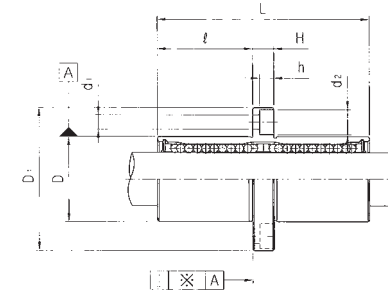
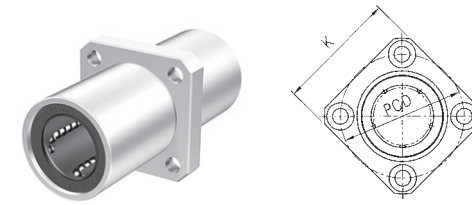


Samick Circular Middle Ranged Linear Bearing	LMFM	20	UU	-	A	N	S
<b>Nominal Shaft Diameter</b>							
<b>Seal</b>							
Blank : No Seal U : One Side Seal UU : Both Side Seal							
<b>Retainer</b>							
Blank : Resin retainer(Standard) A : Steel retainer(High temperature)							
<b>Outer-sleeves (by corrosion resistance type)</b>							
Blank : No-plating(Standard) N : Electroless nickel plating R : Raydent treatment							
<b>Ball type (by corrosion resistance)</b>							
Blank : High carbon bearing steel ball (standard) S : Stainless steel ball							

PART NUMBER		DIAMETER		L	D <sub>1</sub>	ℓ	H	PCD	d <sub>1</sub>	d <sub>2</sub>	h	SQUARENESS ※(μm)	BASIC LOAD RATING(N)		NO. OF BALL	WEIGHT (g)
Resin	Steel	dr.	D										TOLERANCE	TOLERANCE		
LMFM6	LMFM6-A	6	12	35	28	15	5	20	3.4	6.5	3.3	15	320	520	4	31
LMFM8	LMFM8-A	8	15	45	32	20	5	24	3.4	6.5	3.3	15	430	780	4	53
LMFM10	LMFM10-A	10	19	55	40	24.5	6	29	4.5	8	4.4	15	580	1100	4	105
LMFM12	LMFM12-A	12	21	57	42	25.5	6	32	4.5	8	4.4	15	650	1200	4	100
LMFM13	LMFM13-A	13	23	61	43	27.5	6	33	4.5	8	4.4	15	810	1570	4	130
LMFM16	LMFM16-A	16	28	70	48	32	6	38	4.5	8	4.4	15	1230	2350	5	187
LMFM20	LMFM20-A	20	32	80	54	36	8	43	5.5	9.5	5.4	20	1400	2750	5	260
LMFM25	LMFM25-A	25	40	112	62	52	8	51	5.5	9.5	5.4	20	1560	3140	6	515
LMFM30		30	45	123	74	56.5	10	60	6.6	11	6.5	20	2940	5490	6	655
LMFM35		35	52	135	82	62.5	10	67	6.6	11	6.5	25	2650	6470	6	970
LMFM40		40	60	154	96	70.5	13	78	9	14	8.6	25	3430	8040	6	1560
LMFM50		50	80	192	116	89.5	13	98	9	14	8.6	25	6080	15900	6	3500
LMFM60		60	90	211	134	96.5	18	112	11	17.5	10.8	25	7650	20000	6	4500

Note 1) Dynamic load rating is based on the nominal life of 50km.  
In case of 100km, C on the table need to be divided by 1.26  
Ex) LM12's 50km basis dynamic load rating C = 410N  
LM12's 100km basis dynamic load rating C<sub>100</sub> = 410 / 1.26 = 325.40N  
Note 2) Based on the weight of resin retainer  
Note 3) Dimension : mm

LMKM FLANGED LINEAR BEARING LONG

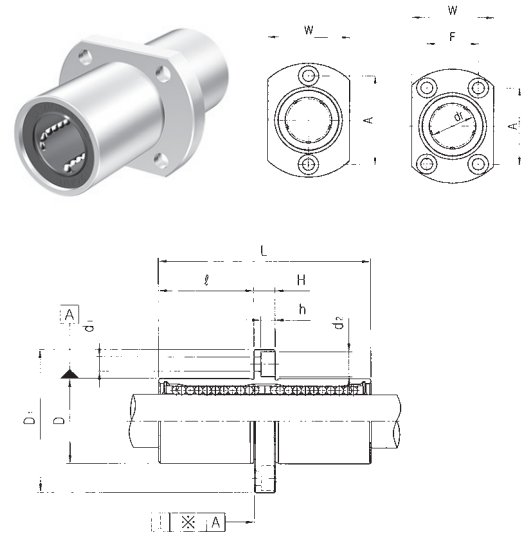


Samick Square Middle Ranged Linear Bearing	LMKM	20	UU	-	A	N	S
<b>Nominal Shaft Diameter</b>							
<b>Seal</b>							
Blank : No Seal U : One Side Seal UU : Both Side Seal							
<b>Retainer</b>							
Blank : Resin retainer(Standard) A : Steel retainer(High temperature)							
<b>Outer-sleeves (by corrosion resistance type)</b>							
Blank : No-plating(Standard) N : Electroless nickel plating R : Raydent treatment							
<b>Ball type (by corrosion resistance)</b>							
Blank : High carbon bearing steel ball (standard) S : Stainless steel ball							

PART NUMBER		DIAMETER		L	D <sub>1</sub>	ℓ	H	PCD	K	d <sub>1</sub>	d <sub>2</sub>	h	SQUARENESS ※(μm)	BASIC LOAD RATING(N)		NO. OF BALL	WEIGHT (g)
Resin	Steel	dr.	D											TOLERANCE	TOLERANCE		
LMKM6	LMKM6-A	6	12	35	28	15	5	20	22	3.4	6.5	3.3	15	320	520	4	31
LMKM8	LMKM8-A	8	15	45	32	20	5	24	25	3.4	6.5	3.3	15	430	780	4	53
LMKM10	LMKM10-A	10	19	55	40	24.5	6	29	30	4.5	8	4.4	15	580	1100	4	105
LMKM12	LMKM12-A	12	21	57	42	25.5	6	32	32	4.5	8	4.4	15	650	1200	4	100
LMKM13	LMKM13-A	13	23	61	43	27.5	6	33	34	4.5	8	4.4	15	810	1570	4	130
LMKM16	LMKM16-A	16	28	70	48	32	6	38	37	4.5	8	4.4	15	1230	2350	5	187
LMKM20	LMKM20-A	20	32	80	54	36	8	43	42	5.5	9.5	5.4	20	1400	2750	5	260
LMKM25	LMKM25-A	25	40	112	62	52	8	51	50	5.5	9.5	5.4	20	1560	3140	6	515
LMKM30		30	45	123	74	56.5	10	60	58	6.6	11	6.5	20	2940	5490	6	655
LMKM35		35	52	135	82	62.5	10	67	64	6.6	11	6.5	25	2650	6470	6	970
LMKM40		40	60	154	96	70.5	13	78	75	9	14	8.6	25	3430	8040	6	2560
LMKM50		50	80	192	116	89.5	13	98	92	9	14	8.6	25	6080	15900	6	3500
LMKM60		60	90	211	134	96.5	18	112	106	11	17.5	10.8	25	7650	20000	6	4500

Note 1) Dynamic load rating is based on the nominal life of 50km.  
In case of 100km, C on the table need to be divided by 1.26  
Ex) LM12's 50km basis dynamic load rating C = 410N  
LM12's 100km basis dynamic load rating C<sub>100</sub> = 410 / 1.26 = 325.40N  
Note 2) Based on the weight of resin retainer  
Note 3) Dimension : mm

LMHM FLANGED LINEAR BEARING



Series	LMHM	20	UU	-	A	N	S
Nominal Shaft Diameter							
Seal	Blank : No Seal U : One Side Seal UU : Both Side Seal						
Retainer	Blank : Resin retainer(Standard) A : Steel retainer(High temperature)						
Outer-sleeves (by corrosion resistance type)	Blank : No-plating(Standard) N : Electroless nickel plating R : Raydent treatment						
Ball type (by corrosion resistance)	Blank : High carbon bearing steel ball (standard) S : Stainless steel ball						

65  
European Standard

PART NUMBER	DIAMETER D		L	D <sub>1</sub>	ℓ	H	W	A	F	d <sub>1</sub>	d <sub>2</sub>	h	SQUARENESS % (μm)	BASIC LOAD RATING(N)		NO. OF BALLS	WEIGHT (gf)	
	Resin	Steel												dr. TOLERANCE	mm TOLERANCE			DYNAMIC(C)
LMHM6	LMHM6-A	6	12	35	28	15	5	18	20	3.4	6.5	3.3	15	320	520	4	31	
LMHM8	LMHM8-A	8	15 <sup>-0.013</sup>	45	32	20	5	21	24	3.4	6.5	3.3	15	430	780	4	53	
LMHM10	LMHM10-A	10	19 <sup>0</sup>	55	40	24.5	6	25	29	4.5	8	4.4	15	580	1100	4	105	
LMHM12	LMHM12-A	12	21 <sup>-0.010</sup>	57	42	25.5	6	27	32	4.5	8	4.4	15	650	1200	4	100	
LMHM13	LMHM13-A	13	23 <sup>-0.016</sup>	61	43	27.5	6	29	33	4.5	8	4.4	15	810	1570	4	130	
LMHM16	LMHM16-A	16	28	70	48	32	6	34	31	22	4.5	8	4.4	15	1230	2350	5	187
LMHM20	LMHM20-A	20	32	80	54	36	8	38	36	24	5.5	9.5	5.4	20	1400	2750	5	260
LMHM25	LMHM25-A	25	40 <sup>0</sup> -0.012	112 <sup>0</sup> -0.019	62	52	8	46	40	32	5.5	9.5	5.4	20	1560	3140	6	515
LMHM30		30	45	123	74	56.5	10	51	49	35	6.6	11	6.5	20	2940	5490	6	655

Note 1) Dynamic load rating is based on the nominal life of 50km.  
In case of 100km, C on the table need to be divided by 1.26  
Ex) LM12's 50km basis dynamic load rating C = 410N  
LM12's 100km basis dynamic load rating C<sub>100</sub> = 410 / 1.26 = 325.40N

Note 2) Based on the weight of resin retainer

Note 3) Dimension : mm